

## 35-1605: Polyclonal Antibody to Integrin beta3 (Ab-785)

<b>Clonality :</b>	Polyclonal
<b>Application :</b>	WB
<b>Reactivity :</b>	Human,Mouse,Rat
<b>Gene :</b>	ITGB3
<b>Gene ID :</b>	3690
<b>Uniprot ID :</b>	P05106
<b>Format :</b>	Purified
<b>Alternative Name :</b>	CD61 antigen, GP3A, GPIIIa, ITB3, Platelet membrane glycoprotein IIIa
<b>Isotype :</b>	Rabbit IgG
<b>Immunogen Information :</b>	Peptide sequence around aa.783~787 (I-T-Y-R-G) derived from Human Integrin B3/ITGB3.

### Description

The Itg-Beta3 gene encodes the beta subunit of the platelet membrane adhesive protein receptor complex Itg-Beta3 protein, which belongs to the Integrin class of cell adhesion molecule receptors that share a common heterotrimeric structure with alpha and Beta subunits. It is a common Beta subunit of the platelet complex and of two other Integrins (Fibronectin and Vitronectin Receptors), which have distinct alpha subunits. Itg-Beta3 has been implicated in a wide variety of functions, including platelet aggregation and thrombosis and implantation, placentation, angiogenesis, bone remodeling, and tumor progression. Glanzmann Thrombasthenia can result from defects in the genes for either the Itg-alpha2B or the Itg-Beta3 subunit Sujoy Bhattacharya, et al. (2006) Biochem J. August 1; 397(Pt 3): 437

### Product Info

<b>Amount :</b>	50 µl / 100 µl
<b>Content :</b>	Supplied at 1.0mg/mL in phosphate buffered saline (without Mg <sup>2+</sup> and Ca <sup>2+</sup> ), pH 7.4, 150mM NaCl, 0.02% sodium azide and 50% glycerol.
<b>Storage condition :</b>	Store the antibody at 4°C, stable for 6 months. For long-term storage, store at -20°C. Avoid repeated freeze and thaw cycles.

### Application Note

Predicted MW: 110kd, Western blotting: 1:500~1:1000

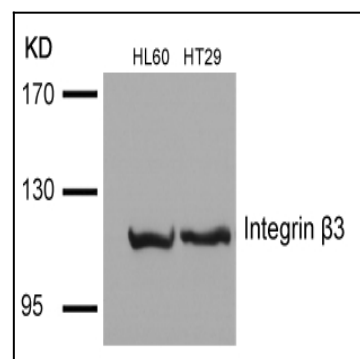


Figure 1: Western blot analysis of extracts from HL60 and HT29 cells using Integrin beta3(Ab-785) Antibody 35-1605 .