

## 35-1604: Polyclonal Antibody to GAP43 (Ab-41)

<b>Clonality :</b>	Polyclonal
<b>Application :</b>	IHC,WB,IF
<b>Reactivity :</b>	Rat,Mouse,Human
<b>Gene :</b>	GAP43
<b>Gene ID :</b>	2596
<b>Uniprot ID :</b>	P17677
<b>Format :</b>	Purified
<b>Alternative Name :</b>	B-50, BASP2, NEUM, PP46, axonal membrane protein GAP-43
<b>Isotype :</b>	Rabbit IgG
<b>Immunogen Information :</b>	Peptide sequence around aa.38~43 (Q-A-S-F-R) derived from Human GAP43.

### Description

GAP43 encoded by this gene has been termed a 'growth' or 'plasticity' protein because it is expressed at high levels in neuronal growth cones during development and axonal regeneration. This protein is considered a crucial component of an effective regenerative response in the nervous system. Alternatively spliced transcript variants encoding distinct isoforms have been found for this gene.

### Product Info

<b>Amount :</b>	50 $\mu$ l / 100 $\mu$ l
<b>Content :</b>	Supplied at 1.0mg/mL in phosphate buffered saline (without Mg <sup>2+</sup> and Ca <sup>2+</sup> ), pH 7.4, 150mM NaCl, 0.02% sodium azide and 50% glycerol.
<b>Storage condition :</b>	Store the antibody at 4°C, stable for 6 months. For long-term storage, store at -20°C. Avoid repeated freeze and thaw cycles.

### Application Note

Predicted MW: 43kd, Western blotting: 1:500~1:1000, Immunohistochemistry: 1:50~1:100, Immunofluorescence: 1:100~1:200

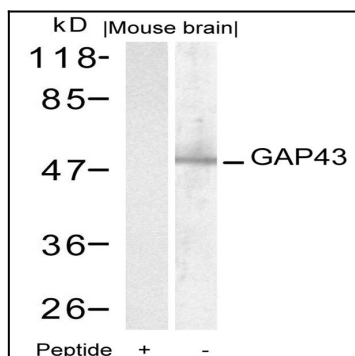


Figure 1: Western blot analysis of extracts from mouse brain tissue using GAP43(Ab-41) Antibody 35-1604 and the same antibody preincubated with blocking peptide.

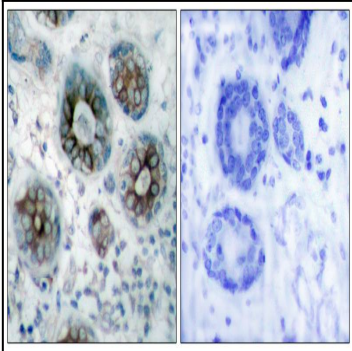


Figure 2: Immunohistochemical analysis of paraffin-embedded human breast carcinoma tissue using GAP43(Ab-41) Antibody 35-1604 (left) or the same antibody preincubated with blocking peptide(right).

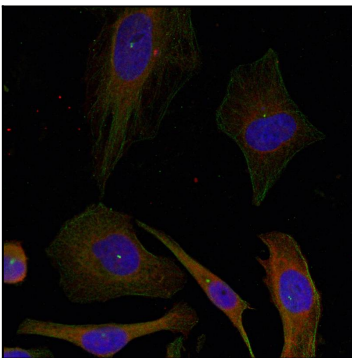


Figure 3: Immunofluorescence staining of methanol-fixed HeLa cells using GAP43(Ab-41) Antibody 35-1604 .