

35-1600: Polyclonal Antibody to p62Dok (Ab-398)

Clonality :	Polyclonal
Application :	WB,IHC,IF
Reactivity :	Human
Gene :	DOK1
Gene ID :	1796
Uniprot ID :	Q99704
Format :	Purified
Alternative Name :	DOK1
Isotype :	Rabbit IgG
Immunogen Information :	Peptide sequence around aa.396~400 (P-I-Y-D-E) derived from Human p62Dok.

Description

DOK proteins are enzymatically inert adaptor or scaffolding proteins. They provide a docking platform for the assembly of multimolecular signaling complexes. DOK1 appears to be a negative regulator of the insulin signaling pathway. Modulates integrin activation by competing with talin for the same binding site on ITGB3.

Product Info

Amount :	50 μ l / 100 μ l
Content :	Supplied at 1.0mg/mL in phosphate buffered saline (without Mg ²⁺ and Ca ²⁺), pH 7.4, 150mM NaCl, 0.02% sodium azide and 50% glycerol.
Storage condition :	Store the antibody at 4°C, stable for 6 months. For long-term storage, store at -20°C. Avoid repeated freeze and thaw cycles.

Application Note

Predicted MW: 62kd, Western blotting: 1:500~1:1000, Immunohistochemistry: 1:50~1:100, Immunofluorescence: 1:100~1:200

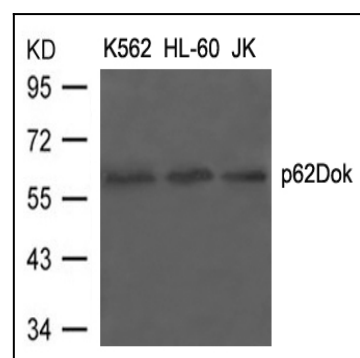


Figure 1: Western blot analysis of extracts from K562, HL-60 and JK cells using p62Dok(Ab-398) Antibody 35-1600 .

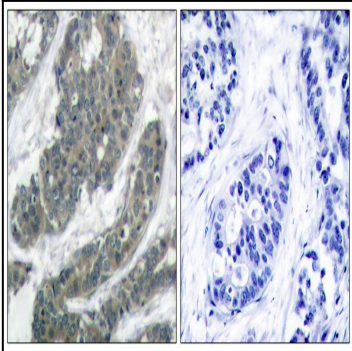


Figure 2: Immunohistochemical analysis of paraffin-embedded human breast carcinoma tissue using p62Dok(Ab-398) Antibody 35-1600 (left) or the same antibody preincubated with blocking peptide(right).

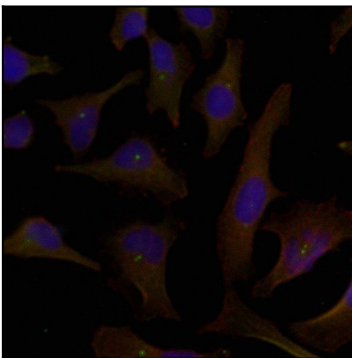


Figure 3: Immunofluorescence staining of methanol-fixed HeLa cells using p62Dok(Ab-398) Antibody 35-1600 .