

35-1589: Polyclonal Antibody to EGFR (Ab-1110) (Discontinued)

Clonality :	Polyclonal
Application :	IHC,WB
Reactivity :	Human
Gene :	EGFR
Gene ID :	1956
Uniprot ID :	P00533
Format :	Purified
Alternative Name :	Receptor tyrosine-protein kinase ErbB-1
Isotype :	Rabbit IgG
Immunogen Information :	Peptide sequence around aa. 1108~1112 (P-V-Y-H-N) derived from Human EGFR.

Description

Receptor for EGF, but also for other members of the EGF family, as TGF- α , amphiregulin, betacellulin, heparin-binding EGF-like growth factor, GP30 and vaccinia virus growth factor. Is involved in the control of cell growth and differentiation. Phosphorylates MUC1 in breast cancer cells and increases the interaction of MUC1 with SRC and CTNNB1/beta-catenin.

Product Info

Amount :	50 μ g / 100 μ g
Content :	Supplied at 1.0mg/mL in phosphate buffered saline (without Mg ²⁺ and Ca ²⁺), pH 7.4, 150mM NaCl, 0.02% sodium azide and 50% glycerol.
Storage condition :	Store the antibody at 4°C, stable for 6 months. For long-term storage, store at -20°C. Avoid repeated freeze and thaw cycles.

Application Note

Predicted MW: 175kd, Western blotting: 1:500~1:1000, Immunohistochemistry: 1:50~1:100

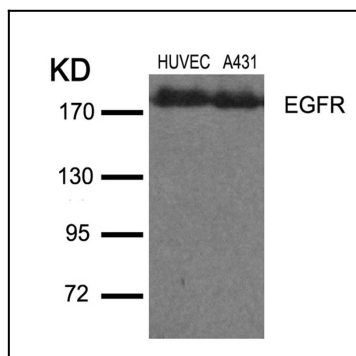


Figure 1: Western blot analysis of extracts from HUVEC and A431 cells using EGFR(Ab-1110) Antibody 35-1589 .

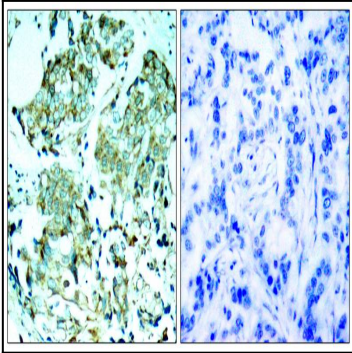


Figure 2: Immunohistochemical analysis of paraffin-embedded human breast carcinoma tissue using EGFR(Ab-1110) Antibody 35-1589 (left) or the same antibody preincubated with blocking peptide(right).