

35-1579: Polyclonal Antibody to p70 S6 Kinase (Ab-421) (Discontinued)

Clonality :	Polyclonal
Application :	IHC,WB
Reactivity :	Rat,Mouse,Human
Gene :	RPS6KB1
Gene ID :	6198
Uniprot ID :	P23443
Format :	Purified
Alternative Name :	KS6B1, P70-S6K, RPS6KB1, S6K
Isotype :	Rabbit IgG
Immunogen Information :	Peptide sequence around aa.419~423 (P-R-T-P-V) derived from Human p70 S6 Kinase.

Description

Phosphorylates specifically ribosomal protein S6 in response to insulin or several classes of mitogens. Promotes protein synthesis by phosphorylating PDCD4 at 'Ser-67' and targeting it for degradation.

Product Info

Amount :	50 µg / 100 µg
Content :	Supplied at 1.0mg/mL in phosphate buffered saline (without Mg ²⁺ and Ca ²⁺), pH 7.4, 150mM NaCl, 0.02% sodium azide and 50% glycerol.
Storage condition :	Store the antibody at 4°C, stable for 6 months. For long-term storage, store at -20°C. Avoid repeated freeze and thaw cycles.

Application Note

Predicted MW: 70 85 kd, Western blotting: 1:500~1:1000, Immunohistochemistry: 1:50~1:100

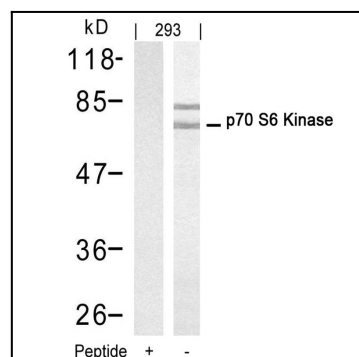


Figure 1: Western blot analysis of extracts from 293 cells using p70 S6 Kinase(Ab-421) Antibody 35-1579 (Lane 2) and the same antibody preincubated with blocking peptide(Lane1).

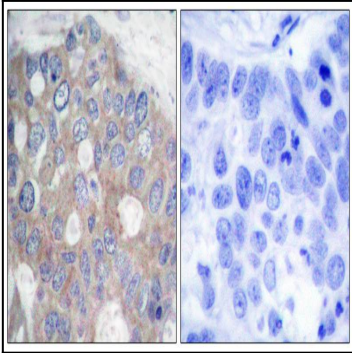


Figure 2: Immunohistochemical analysis of paraffin-embedded human breast carcinoma tissue using p70 S6 Kinase(Ab-421) Antibody 35-1579 (left) or the same antibody preincubated with blocking peptide(right).