

## 35-1573: Polyclonal Antibody to p44/42 MAP Kinase (Ab-204)

<b>Clonality :</b>	Polyclonal
<b>Application :</b>	WB
<b>Reactivity :</b>	Human,Mouse,Rat
<b>Gene :</b>	MAPK3
<b>Gene ID :</b>	5595
<b>Uniprot ID :</b>	P27361
<b>Format :</b>	Purified
<b>Alternative Name :</b>	Extracellular signal-regulated kinase 1
<b>Isotype :</b>	Rabbit IgG
<b>Immunogen Information :</b>	Peptide sequence around aa. 202~206 (T-E-Y-V-A) derived from Human p44/42 MAP Kinase.

### Description

Involved in both the initiation and regulation of meiosis, mitosis, and postmitotic functions in differentiated cells by phosphorylating a number of transcription factors such as ELK-1. Phosphorylates EIF4EBP1; required for initiation of translation. Phosphorylates microtubule-associated protein 2 (MAP2). Phosphorylates SPZ1 TETE HANNKEN, et al. (2000) Am Soc Nephrol 11:1387-1397 Omar D. PerezNature et al. (2002) Biotechnology 20: 155 - 162 Jingui Yu, et al. (2005) Anesth Analg 101: 315-321 Hironobu Ihn et al.(2000) Immunology 165: 2149-2155

### Product Info

<b>Amount :</b>	50 µl / 100 µl
<b>Content :</b>	Supplied at 1.0mg/mL in phosphate buffered saline (without Mg <sup>2+</sup> and Ca <sup>2+</sup> ), pH 7.4, 150mM NaCl, 0.02% sodium azide and 50% glycerol.
<b>Storage condition :</b>	Store the antibody at 4°C, stable for 6 months. For long-term storage, store at -20°C. Avoid repeated freeze and thaw cycles.

### Application Note

Predicted MW: 42 44 kd, Western blotting: 1:500~1:1000

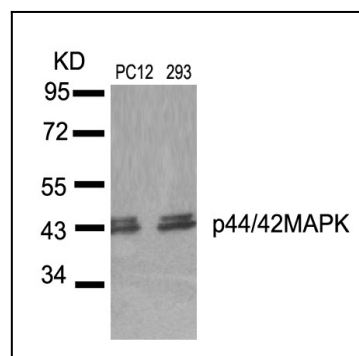


Figure 1: Western blot analysis of extracts from PC12 and 293 cells using p44/42 MAP Kinase(Ab-204) Antibody 35-1573 .