

35-1571: Polyclonal Antibody to CDC2 (Ab-15)

Clonality :	Polyclonal
Application :	WB,IHC,IF
Reactivity :	Human,Mouse,Rat
Gene :	CDK1
Gene ID :	983
Uniprot ID :	P06493
Format :	Purified
Alternative Name :	CDC28, CDC2A, CDK1, Cyclin-dependent kinase 1, Cell division control protein 2 homolog, p34 protein kinase
Isotype :	Rabbit IgG
Immunogen Information :	Peptide sequence around aa. 13~17 (G-T-Y-G-V) derived from Human CDC2.

Description

Plays a key role in the control of the eukaryotic cell cycle. It is required in higher cells for entry into S-phase and mitosis. p34 is a component of the kinase complex that phosphorylates the repetitive C-terminus of RNA polymerase II.

Product Info

Amount :	50 μ l / 100 μ l
Content :	Supplied at 1.0mg/mL in phosphate buffered saline (without Mg ²⁺ and Ca ²⁺), pH 7.4, 150mM NaCl, 0.02% sodium azide and 50% glycerol.
Storage condition :	Store the antibody at 4°C, stable for 6 months. For long-term storage, store at -20°C. Avoid repeated freeze and thaw cycles.

Application Note

Predicted MW: 34kd, Western blotting: 1:500~1:1000, Immunohistochemistry: 1:50~1:100, Immunofluorescence: 1:100~1:200

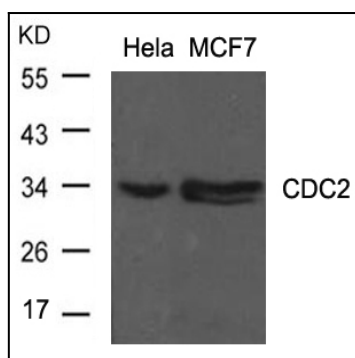


Figure 1: Western blot analysis of extracts from HeLa and MCF cells using CDC2(Ab-15) Antibody 35-1571 .

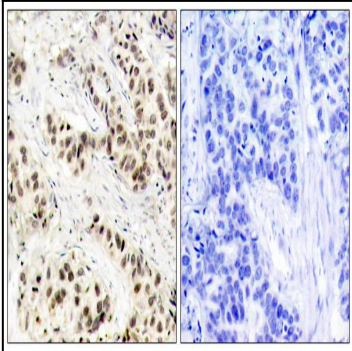


Figure 2: Immunohistochemical analysis of paraffin-embedded human breast carcinoma tissue using CDC2(Ab-15) Antibody 35-1571 (left) or the same antibody preincubated with blocking peptide(right).

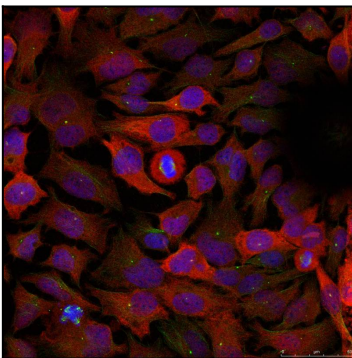


Figure 3: Immunofluorescence staining of methanol-fixed HeLa cells using CDC2(Ab-15) Antibody 35-1571 .