

## 35-1567: Polyclonal Antibody to FGF Receptor 1 (Ab-154)

<b>Clonality :</b>	Polyclonal
<b>Application :</b>	WB
<b>Reactivity :</b>	Human,Mouse
<b>Gene :</b>	MET
<b>Gene ID :</b>	4233
<b>Uniprot ID :</b>	P08581
<b>Format :</b>	Purified
<b>Alternative Name :</b>	FGFBR, FGFR-1, FGR1, FLG, FLT2
<b>Isotype :</b>	Rabbit IgG
<b>Immunogen Information :</b>	Peptide sequence around aa.152~156 (A-P-Y-W-T) derived from Human FGF Receptor 1.

### Description

FGF encoded by this gene is a member of the fibroblast growth factor (FGF) family. FGF family members possess broad mitogenic and cell survival activities, and are involved in a variety of biological processes, including embryonic development, cell growth, morphogenesis, tissue repair, tumor growth and invasion. This protein functions as a modifier of endothelial cell migration and proliferation, as well as an angiogenic factor. It acts as a mitogen for a variety of mesoderm- and neuroectoderm-derived cells in vitro, thus is thought to be involved in organogenesis. Multiple alternatively spliced variants encoding different isoforms have been described.

### Product Info

<b>Amount :</b>	50 $\mu$ l / 100 $\mu$ l
<b>Content :</b>	Supplied at 1.0mg/mL in phosphate buffered saline (without Mg <sup>2+</sup> and Ca <sup>2+</sup> ), pH 7.4, 150mM NaCl, 0.02% sodium azide and 50% glycerol.
<b>Storage condition :</b>	Store the antibody at 4°C, stable for 6 months. For long-term storage, store at -20°C. Avoid repeated freeze and thaw cycles.

### Application Note

Predicted MW: 145kd, Western blotting: 1:500~1:1000

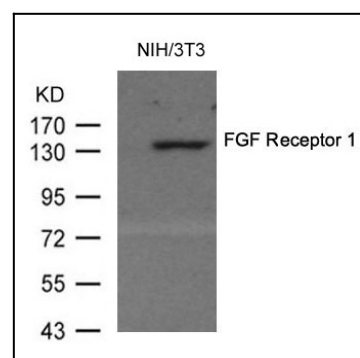


Figure 1: Western blot analysis of extracts from 3T3 cells using FGF Receptor 1(Ab-154) Antibody 35-1567 and the same antibody preincubated with blocking peptide.