

35-1564: Polyclonal Antibody to eIF4E (Ab-209)

Clonality :	Polyclonal
Application :	WB,IHC,IF
Reactivity :	Human,Mouse,Rat
Gene :	EIF4E
Gene ID :	1977
Uniprot ID :	P06730
Format :	Purified
Alternative Name :	mRNA cap-binding protein, eIF-4F 25 kDa subunit
Isotype :	Rabbit IgG
Immunogen Information :	Peptide sequence around aa. 207~211 (S-G-S-T-T) derived from Human eIF4E.

Description

Recognizes and binds the 7-methylguanosine-containing mRNA cap during an early step in the initiation of protein synthesis and facilitates ribosome binding by inducing the unwinding of the mRNAs secondary structures.

Product Info

Amount :	50 µl / 100 µl
Content :	Supplied at 1.0mg/mL in phosphate buffered saline (without Mg ²⁺ and Ca ²⁺), pH 7.4, 150mM NaCl, 0.02% sodium azide and 50% glycerol.
Storage condition :	Store the antibody at 4°C, stable for 6 months. For long-term storage, store at -20°C. Avoid repeated freeze and thaw cycles.

Application Note

Predicted MW: 25kd, Western blotting: 1:500~1:1000, Immunohistochemistry: 1:50~1:100, Immunofluorescence: 1:100~1:200

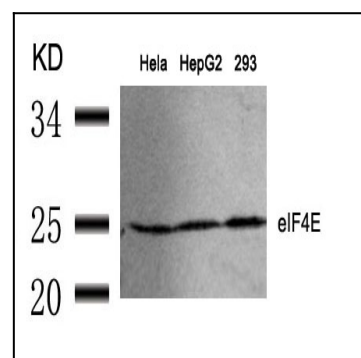


Figure 1: Western blot analysis of extracts from HeLa, HepG2 and 293 cells using eIF4E(Ab-209) Antibody 35-1564 .

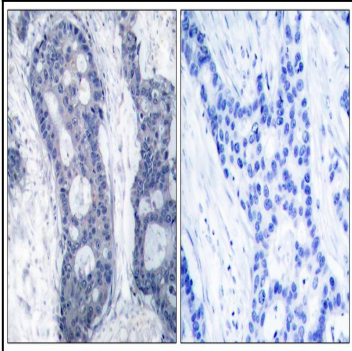


Figure 2: Immunohistochemical analysis of paraffin-embedded human breast carcinoma tissue using eIF4E(Ab-209) Antibody 35-1564 (left) or the same antibody preincubated with blocking peptide(right).

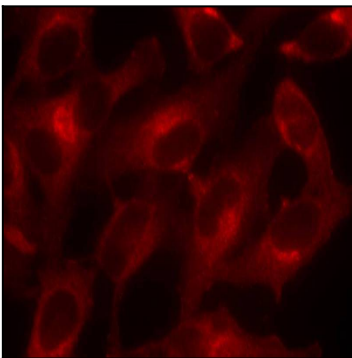


Figure 3: Immunofluorescence staining of methanol-fixed HeLa cells using eIF4E(Ab-209) Antibody 35-1564 .