

35-1563: Polyclonal Antibody to S6 Ribosomal Protein (Ab-235)

| | |
|--------------------------------|--|
| Clonality : | Polyclonal |
| Application : | WB,IHC,IF |
| Reactivity : | Human,Mouse,Rat |
| Gene : | RPS6 |
| Gene ID : | 6194 |
| Uniprot ID : | P62753 |
| Format : | Purified |
| Alternative Name : | NP33, RPS6, RS6 |
| Isotype : | Rabbit IgG |
| Immunogen Information : | Peptide sequence around aa. 233~237 (R-L-S-S-L) derived from Human S6 Ribosomal Protein. |

Description

May play an important role in controlling cell growth and proliferation through the selective translation of particular classes of mRNA.

Product Info

| | |
|----------------------------|--|
| Amount : | 50 μ l / 100 μ l |
| Content : | Supplied at 1.0mg/mL in phosphate buffered saline (without Mg ²⁺ and Ca ²⁺), pH 7.4, 150mM NaCl, 0.02% sodium azide and 50% glycerol. |
| Storage condition : | Store the antibody at 4°C, stable for 6 months. For long-term storage, store at -20°C. Avoid repeated freeze and thaw cycles. |

Application Note

Predicted MW: 32kd, Western blotting: 1:500~1:1000, Immunohistochemistry: 1:50~1:100, Immunofluorescence: 1:100~1:200

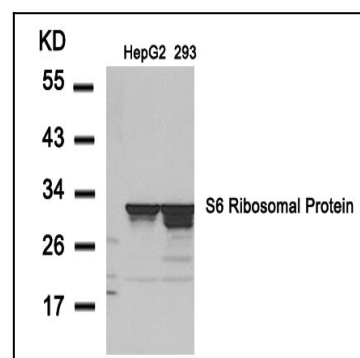


Figure 1: Western blot analysis of extracts from HepG2 and 293 cells using S6 Ribosomal Protein(Ab-235) Antibody 35-1563 .

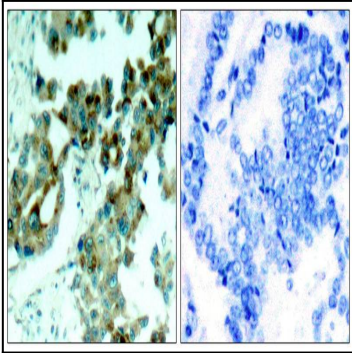


Figure 2: Immunohistochemical analysis of paraffin- embedded human lung carcinoma tissue using S6 Ribosomal Protein(Ab-235) Antibody 35-1563 (left) or the same antibody preincubated with blocking peptide(right).

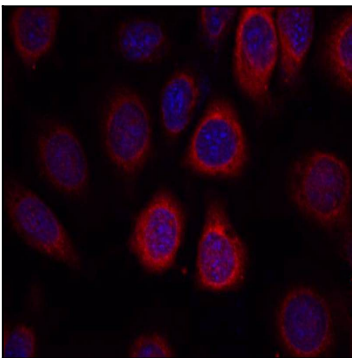


Figure 3: Immunofluorescence staining of methanol-fixed MCF7 cells using S6 Ribosomal Protein(Ab-235) Antibody 35-1563 .