

35-1560: Polyclonal Antibody to EGFR (Ab-869)

Clonality :	Polyclonal
Application :	IHC,WB
Reactivity :	Rat,Mouse,Human
Gene :	EGFR
Gene ID :	1956
Uniprot ID :	P00533
Format :	Purified
Alternative Name :	Receptor tyrosine-protein kinase ErbB-1, ERBB1
Isotype :	Rabbit IgG
Immunogen Information :	Peptide sequence around aa.867~871 (K-E-Y-H-A) derived from Human EGFR.

Description

Receptor for EGF, but also for other members of the EGF family, as TGF- α , amphiregulin, betacellulin, heparin-binding EGF-like growth factor, GP30 and vaccinia virus growth factor.

Product Info

Amount :	50 μ l / 100 μ l
Content :	Supplied at 1.0mg/mL in phosphate buffered saline (without Mg ²⁺ and Ca ²⁺), pH 7.4, 150mM NaCl, 0.02% sodium azide and 50% glycerol.
Storage condition :	Store the antibody at 4°C, stable for 6 months. For long-term storage, store at -20°C. Avoid repeated freeze and thaw cycles.

Application Note

Predicted MW: 175kd, Western blotting: 1:500~1:1000, Immunohistochemistry: 1:50~1:100

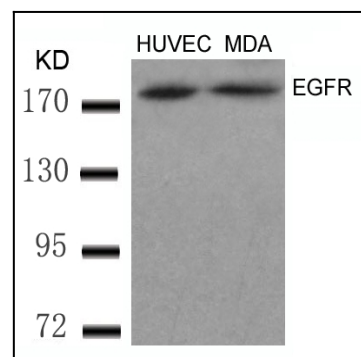


Figure 1: Western blot analysis of extracts from HUVEC and MDA cells using EGFR(Ab-869) Antibody 35-1560 .

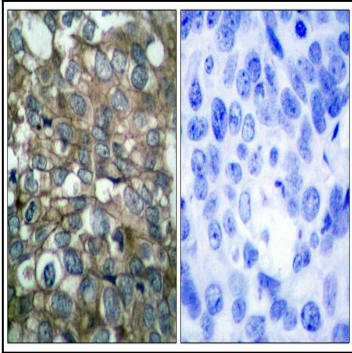


Figure 2: Immunohistochemical analysis of paraffin-embedded human breast carcinoma tissue using EGFR(Ab-869) Antibody 35-1560 (left) or the same antibody preincubated with blocking peptide(right).