

35-1555: Polyclonal Antibody to Stathmin 1 (Ab-25)

| | |
|--------------------------------|--|
| Clonality : | Polyclonal |
| Application : | WB,IHC,IF |
| Reactivity : | Human,Mouse,Rat |
| Gene : | STMN1 |
| Gene ID : | 3925 |
| Uniprot ID : | P16949 |
| Format : | Purified |
| Alternative Name : | STMN1, STN1, stathmin |
| Isotype : | Rabbit IgG |
| Immunogen Information : | Peptide sequence around aa. 23~27 (I-L-S-P-R) derived from Human Stathmin 1. |

Description

Involved in the regulation of the microtubule (MT) filament system by destabilizing microtubules. Prevents assembly and promotes disassembly of microtubules. Phosphorylation at Ser-16 may be required for axon formation during neurogenesis. Involved in the control of the learned and innate fear

Product Info

| | |
|----------------------------|--|
| Amount : | 50 μ l / 100 μ l |
| Content : | Supplied at 1.0mg/mL in phosphate buffered saline (without Mg ²⁺ and Ca ²⁺), pH 7.4, 150mM NaCl, 0.02% sodium azide and 50% glycerol. |
| Storage condition : | Store the antibody at 4°C, stable for 6 months. For long-term storage, store at -20°C. Avoid repeated freeze and thaw cycles. |

Application Note

Predicted MW: 19kd, Western blotting: 1:500~1:1000, Immunohistochemistry: 1:50~1:100, Immunofluorescence: 1:100~1:200

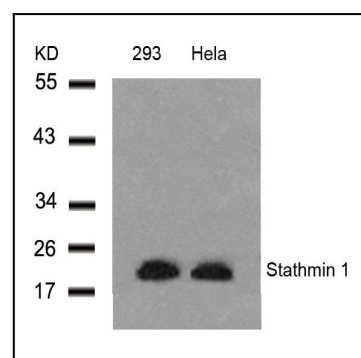


Figure 1: Western blot analysis of extracts from 293 and HeLa cells using Stathmin 1(Ab-25) Antibody 35-1555 .

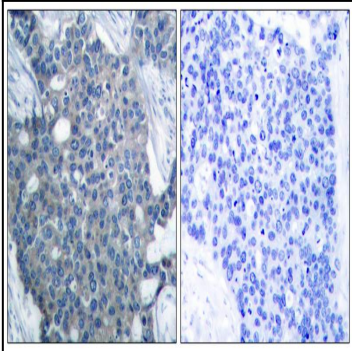


Figure 2: Immunohistochemical analysis of paraffin-embedded human breast carcinoma tissue using Stathmin 1(Ab-25) Antibody 35-1555 (left) or the same antibody preincubated with blocking peptide(right).

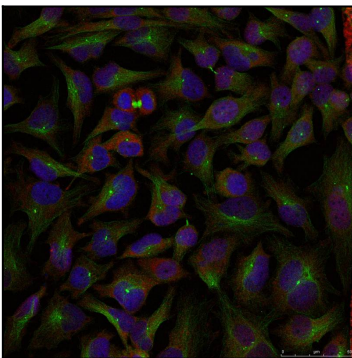


Figure 3: Immunofluorescence staining of methanol-fixed HeLa cells using Stathmin 1(Ab-25) Antibody 35-1555 .