

## 35-1554: Polyclonal Antibody to 4E-BP1 (Ab-45)

|                                |   |
|--------------------------------|---|
| <b>Clonality :</b>             | Polyclonal  |
| <b>Application :</b>           | IHC,WB,IF   |
| <b>Reactivity :</b>            | Rat,Mouse,Human   |
| <b>Gene :</b>                  | EIF4EBP1  |
| <b>Gene ID :</b>               | 1978  |
| <b>Uniprot ID :</b>            | Q13541  |
| <b>Format :</b>                | Purified  |
| <b>Alternative Name :</b>      | EIF4EBP1, PHAS-1  |
| <b>Isotype :</b>               | Rabbit IgG  |
| <b>Immunogen Information :</b> | Peptide sequence around aa.43~47 (S-T-T-P-G) derived from Human 4E-BP1. |

### Description

4E-BP1 encodes one member of a family of translation repressor proteins. The protein directly interacts with eukaryotic translation initiation factor 4E (eIF4E), which is a limiting component of the multisubunit complex that recruits 40S ribosomal subunits to the 5' end of mRNAs. Interaction of this protein with eIF4E inhibits complex assembly and represses translation. This protein is phosphorylated in response to various signals including UV irradiation and insulin signaling, resulting in its dissociation from eIF4E and activation of mRNA translation.

### Product Info

|                            |  |
|----------------------------|--|
| <b>Amount :</b>            | 50 $\mu$ l / 100 $\mu$ l   |
| <b>Content :</b>           | Supplied at 1.0mg/mL in phosphate buffered saline (without Mg <sup>2+</sup> and Ca <sup>2+</sup> ), pH 7.4, 150mM NaCl, 0.02% sodium azide and 50% glycerol. |
| <b>Storage condition :</b> | Store the antibody at 4°C, stable for 6 months. For long-term storage, store at -20°C. Avoid repeated freeze and thaw cycles.                                |

### Application Note

Predicted MW: 18kd, Western blotting: 1:500~1:1000, Immunohistochemistry: 1:50~1:100, Immunofluorescence: 1:100~1:200

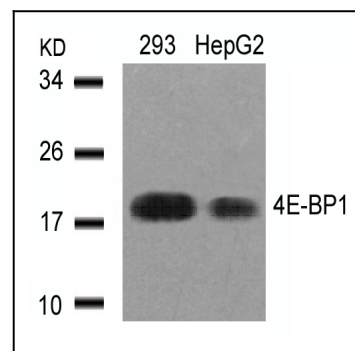


Figure 1: Western blot analysis of extracts from 293 and HepG2 cells using 4E-BP1(Ab-45) Antibody 35-1554 .

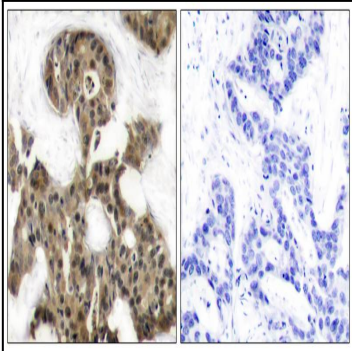


Figure 2: Immunohistochemical analysis of paraffin-embedded human breast carcinoma tissue using 4E-BP1(Ab-45) Antibody 35-1554 (left) or the same antibody preincubated with blocking peptide(right).

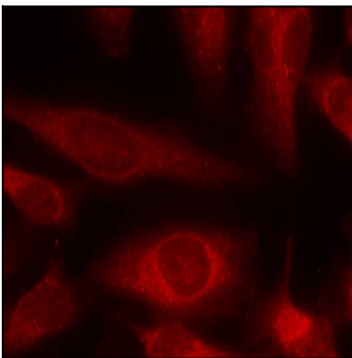


Figure 3: Immunofluorescence staining of methanol-fixed HeLa cells using 4E-BP1(Ab-45) Antibody 35-1554 .