

### 35-1544: Polyclonal Antibody to HSF1 (Ab-307)

<b>Clonality :</b>	Polyclonal
<b>Application :</b>	WB,IHC
<b>Reactivity :</b>	Human
<b>Gene :</b>	HSF1
<b>Gene ID :</b>	3297
<b>Uniprot ID :</b>	Q00613
<b>Format :</b>	Purified
<b>Alternative Name :</b>	HSTF 1
<b>Isotype :</b>	Rabbit IgG
<b>Immunogen Information :</b>	Peptide sequence around aa. 305~309 (P-Q-S-P-R) derived from Human HSF1.

#### Description

DNA-binding protein that specifically binds heat shock promoter elements (HSE) and activates transcription. In higher eukaryotes, HSF is unable to bind to the HSE unless the cells are heat shocked.

#### Product Info

<b>Amount :</b>	50 $\mu$ l / 100 $\mu$ l
<b>Content :</b>	Supplied at 1.0mg/mL in phosphate buffered saline (without Mg <sup>2+</sup> and Ca <sup>2+</sup> ), pH 7.4, 150mM NaCl, 0.02% sodium azide and 50% glycerol.
<b>Storage condition :</b>	Store the antibody at 4°C, stable for 6 months. For long-term storage, store at -20°C. Avoid repeated freeze and thaw cycles.

#### Application Note

Predicted MW: 82kd, Western blotting: 1:500~1:1000, Immunohistochemistry: 1:50~1:100

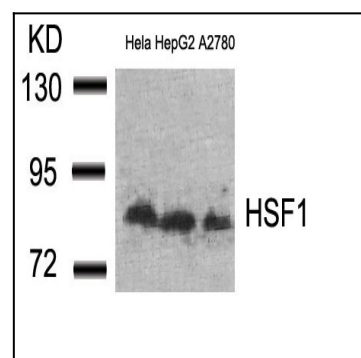


Figure 1: Western blot analysis of extracts from HeLa, HepG2 and A2780 cells using HSF1(Ab-307) Antibody 35-1544 .

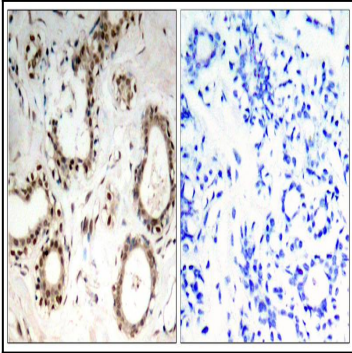


Figure 2: Immunohistochemical analysis of paraffin-embedded human breast carcinoma tissue using HSF1(Ab-307) Antibody 35-1544 (left) or the same antibody preincubated with blocking peptide(right).