

35-1541: Polyclonal Antibody to MEK1/MEK2 (Ab-217/221)

Clonality :	Polyclonal
Application :	WB,IHC,IF
Reactivity :	Human,Mouse,Rat
Gene :	MAP2K1
Gene ID :	5604
Uniprot ID :	Q02750
Format :	Purified
Alternative Name :	ERK activator kinase 1/ERK activator kinase2, MAP kinase kinase 1/MAP kinase kinase 2, MAP2K1/MAP2K1, MAPK/ERK kinase 1/MAPK/ERK kinase 2, MAPKK 1/MAPKK 1
Isotype :	Rabbit IgG
Immunogen Information :	Peptide sequence around aa.215~219/219~223 (I-D-S-M-A) derived from Human MEK1/MEK2.

Description

Catalyzes the concomitant phosphorylation of a threonine and a tyrosine residue in a Thr-Glu-Tyr sequence located in MAP kinases. Activates ERK1 and ERK2 MAP kinases.

Product Info

Amount :	50 µl / 100 µl
Content :	Supplied at 1.0mg/mL in phosphate buffered saline (without Mg ²⁺ and Ca ²⁺), pH 7.4, 150mM NaCl, 0.02% sodium azide and 50% glycerol.
Storage condition :	Store the antibody at 4°C, stable for 6 months. For long-term storage, store at -20°C. Avoid repeated freeze and thaw cycles.

Application Note

Predicted MW: 45kd, Western blotting: 1:500~1:1000, Immunohistochemistry: 1:50~1:100, Immunofluorescence: 1:100~1:200

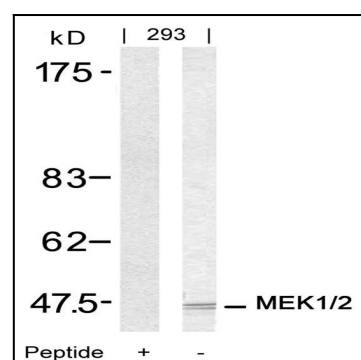


Figure 1: Western blot analysis of extracts from 293 cells using MEK1/MEK2(Ab-217/221) Antibody 35-1541 and the same antibody preincubated with blocking peptide.

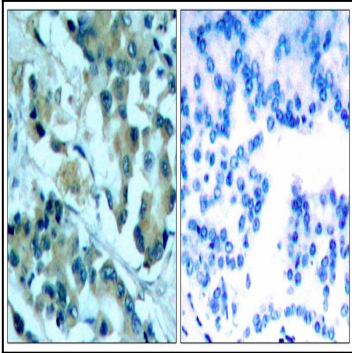


Figure 2: Immunohistochemical analysis of paraffin-embedded human lung carcinoma tissue using MEK1/MEK2(Ab-217/221) Antibody 35-1541 (left) or the same antibody preincubated with blocking peptide(right).

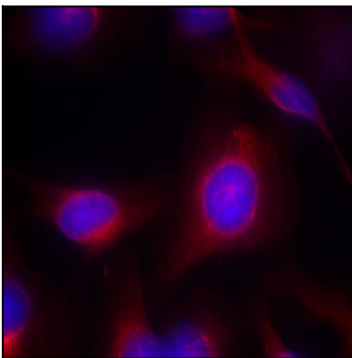


Figure 3: Immunofluorescence staining of methanol-fixed HeLa cells using MEK1/MEK2(Ab-217/221) Antibody 35-1541 .