

35-1540: Polyclonal Antibody to Raf1 (Ab-338)

Clonality :	Polyclonal
Application :	WB,IHC
Reactivity :	Human,Mouse,Rat
Gene :	RAF1
Gene ID :	5894
Uniprot ID :	P04049
Format :	Purified
Alternative Name :	C-RAF, C-Raf, CRAF
Isotype :	Rabbit IgG
Immunogen Information :	Peptide sequence around aa.336~340 (R-D-S-S-Y) derived from Human RAF.

Description

Involved in the transduction of mitogenic signals from the cell membrane to the nucleus. Part of the Ras-dependent signaling pathway from receptors to the nucleus. Protects cells from apoptosis mediated by STK3.

Product Info

Amount :	50 μ l / 100 μ l
Content :	Supplied at 1.0mg/mL in phosphate buffered saline (without Mg ²⁺ and Ca ²⁺), pH 7.4, 150mM NaCl, 0.02% sodium azide and 50% glycerol.
Storage condition :	Store the antibody at 4°C, stable for 6 months. For long-term storage, store at -20°C. Avoid repeated freeze and thaw cycles.

Application Note

Predicted MW: 73kd, Western blotting: 1:500~1:1000, Immunohistochemistry: 1:50~1:100

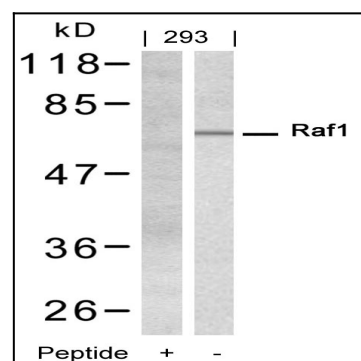


Figure 1: Western blot analysis of extracts from 293 cells using Raf1(Ab-338) Antibody 35-1540 and the same antibody preincubated with blocking peptide.

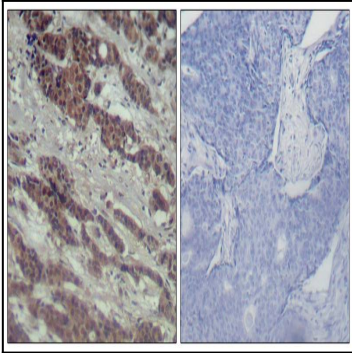


Figure 2: Immunohistochemical analysis of paraffin-embedded human breast carcinoma tissue using Raf1(Ab-338) Antibody 35-1540 (left) or the same antibody preincubated with blocking peptide(right).