

35-1539: Polyclonal Antibody to Rac1 (Ab-71)

Clonality :	Polyclonal
Application :	WB,IF
Reactivity :	Human,Mouse,Rat
Gene :	RAC1
Gene ID :	5879
Uniprot ID :	P63000
Format :	Purified
Alternative Name :	Ras-like protein TC25, Ras-related C3 botulinum toxin substrate 1, p21-Rac1
Isotype :	Rabbit IgG
Immunogen Information :	Peptide sequence around aa.69~73 (P-L-S-Y-P) derived from Human Rac1.

Description

Rac1 encoded by this gene is a GTPase which belongs to the RAS superfamily of small GTP-binding proteins. Members of this superfamily appear to regulate a diverse array of cellular events, including the control of cell growth, cytoskeletal reorganization, and the activation of protein kinases. Two transcript variants encoding different isoforms have been found for this gene.

Product Info

Amount :	50 μ l / 100 μ l
Content :	Supplied at 1.0mg/mL in phosphate buffered saline (without Mg ²⁺ and Ca ²⁺), pH 7.4, 150mM NaCl, 0.02% sodium azide and 50% glycerol.
Storage condition :	Store the antibody at 4°C, stable for 6 months. For long-term storage, store at -20°C. Avoid repeated freeze and thaw cycles.

Application Note

Predicted MW: 21kd, Western blotting: 1:500~1:1000, Immunofluorescence: 1:100~1:200

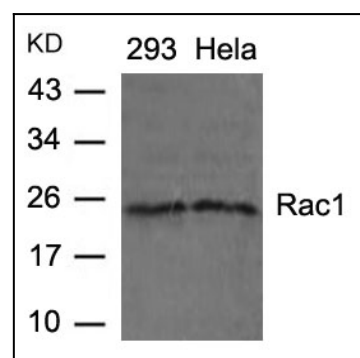


Figure 1: Western blot analysis of extracts from 293 and HeLa cells using Rac1(Ab-71) Antibody 35-1539 .

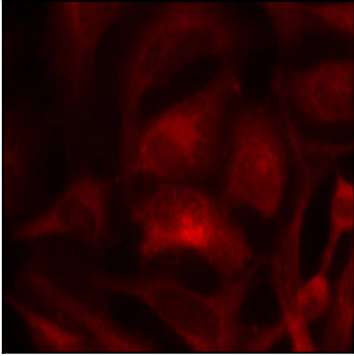


Figure 2: Immunofluorescence staining of methanol-fixed HeLa cells using Rac1(Ab-71) Antibody 35-1539 .