

### 35-1535: Polyclonal Antibody to Bcr (Ab-177)

<b>Clonality :</b>	Polyclonal
<b>Application :</b>	WB,IF
<b>Reactivity :</b>	Human,Mouse
<b>Gene :</b>	BCR
<b>Gene ID :</b>	613
<b>Uniprot ID :</b>	P11274
<b>Format :</b>	Purified
<b>Alternative Name :</b>	Renal carcinoma antigen NY-REN-26
<b>Isotype :</b>	Rabbit IgG
<b>Immunogen Information :</b>	Peptide sequence around aa. 175~179 (P-F-Y-V-N) derived from Human Bcr.

#### Description

GTPase-activating protein for RAC1 and CDC42. Promotes the exchange of RAC or CDC42-bound GDP by GTP, thereby activating them. Displays serine/threonine kinase activity.

#### Product Info

<b>Amount :</b>	50 $\mu$ l / 100 $\mu$ l
<b>Content :</b>	Supplied at 1.0mg/mL in phosphate buffered saline (without Mg <sup>2+</sup> and Ca <sup>2+</sup> ), pH 7.4, 150mM NaCl, 0.02% sodium azide and 50% glycerol.
<b>Storage condition :</b>	Store the antibody at 4°C, stable for 6 months. For long-term storage, store at -20°C. Avoid repeated freeze and thaw cycles.

#### Application Note

Predicted MW: 130 160 210kd, Western blotting: 1:500~1:1000, Immunofluorescence: 1:100~1:200

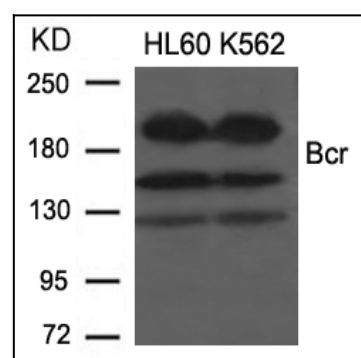


Figure 1: Western blot analysis of extracts from HL60 and K562 cells using Bcr(Ab-177) Antibody 35-1535 .

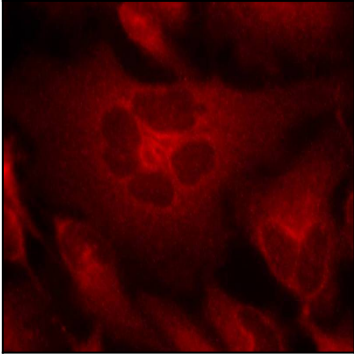


Figure 2: Immunofluorescence staining of methanol-fixed HeLa cells using Bcr(Ab-177) Antibody 35-1535 .