

## 35-1534: Polyclonal Antibody to Ephrin-B2 (Ab-330)

<b>Clonality :</b>	Polyclonal
<b>Application :</b>	WB,IF
<b>Reactivity :</b>	Human,Mouse,Rat
<b>Gene :</b>	EFNB2
<b>Gene ID :</b>	1948
<b>Uniprot ID :</b>	P52799
<b>Format :</b>	Purified
<b>Alternative Name :</b>	EFNB2, HTKL, LERK5
<b>Isotype :</b>	Rabbit IgG
<b>Immunogen Information :</b>	Peptide sequence around aa.328~332 (N-I-Y-Y-K) derived from Human Ephrin B (ephrin-B2).

### Description

Ephrin-B2 encodes a member of the ephrin (EPH) family. The ephrins and EPH-related receptors comprise the largest subfamily of receptor protein-tyrosine kinases and have been implicated in mediating developmental events, especially in the nervous system and in erythropoiesis. Based on their structures and sequence relationships, ephrins are divided into the ephrin-A (EFNA) class, which are anchored to the membrane by a lysosylphosphatidylinositol linkage, and the ephrin-B (EFNB) class, which are transmembrane proteins. This gene encodes an EFNB class ephrin which binds to the EPHB4 and EPHA3 receptors. Chrencik JE,et al.( 2006) J Biol Chem;281(38):28185-28192. Kertesz N, et al. (2006) Blood; 107(6):2330-2338. Noren NK, et al. (2004) Proc Natl Acad Sci USA; 101(15):5583-5588.

### Product Info

<b>Amount :</b>	50 µl / 100 µl
<b>Content :</b>	Supplied at 1.0mg/mL in phosphate buffered saline (without Mg <sup>2+</sup> and Ca <sup>2+</sup> ), pH 7.4, 150mM NaCl, 0.02% sodium azide and 50% glycerol.
<b>Storage condition :</b>	Store the antibody at 4°C, stable for 6 months. For long-term storage, store at -20°C. Avoid repeated freeze and thaw cycles.

### Application Note

Predicted MW: 37kd, Western blotting: 1:500~1:1000, Immunofluorescence: 1:100~1:200

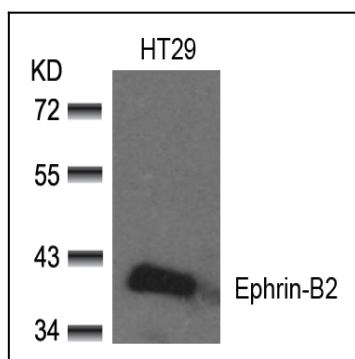


Figure 1: Western blot analysis of extracts from HT29 cells using Ephrin-B2(Ab-330) Antibody 35-1534 .

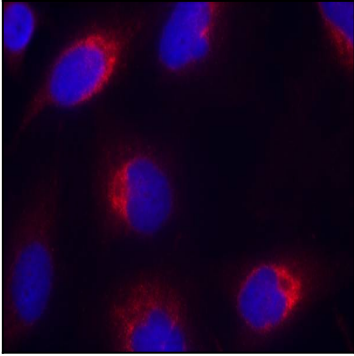


Figure 2: Immunofluorescence staining of methanol-fixed HeLa cells using Ephrin-B2(Ab-330) Antibody 35-1534 .