

35-1525: Polyclonal Antibody to PLC Gamma2 (Ab-753)

| | |
|--------------------------------|---|
| Clonality : | Polyclonal |
| Application : | WB,IF |
| Reactivity : | Human,Mouse,Rat |
| Gene : | PLCG2 |
| Gene ID : | 5336 |
| Uniprot ID : | P16885 |
| Format : | Purified |
| Alternative Name : | Phosphoinositide phospholipase C, Phospholipase C-gamma-2 |
| Isotype : | Rabbit IgG |
| Immunogen Information : | Peptide sequence around aa. 751~755 (S-L-Y-D-V) derived from Human PLCg2. |

Description

The production of the second messenger molecules diacylglycerol. (DAG) and inositol 1,4,5-trisphosphate (IP3) is mediated by activated phosphatidylinositol-specific phospholipase C enzymes. It is a crucial enzyme in transmembrane signaling.

Product Info

| | |
|----------------------------|--|
| Amount : | 50 µl / 100 µl |
| Content : | Supplied at 1.0mg/mL in phosphate buffered saline (without Mg ²⁺ and Ca ²⁺), pH 7.4, 150mM NaCl, 0.02% sodium azide and 50% glycerol. |
| Storage condition : | Store the antibody at 4°C, stable for 6 months. For long-term storage, store at -20°C. Avoid repeated freeze and thaw cycles. |

Application Note

Predicted MW: 150kd, Western blotting: 1:500~1:1000, Immunofluorescence: 1:100~1:200

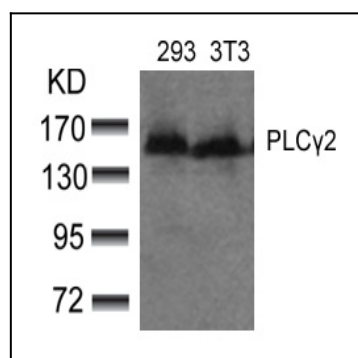


Figure 1: Western blot analysis of extracts from 293 and 3T3 cells using PLCg2(Ab-753) Antibody 35-1525 .

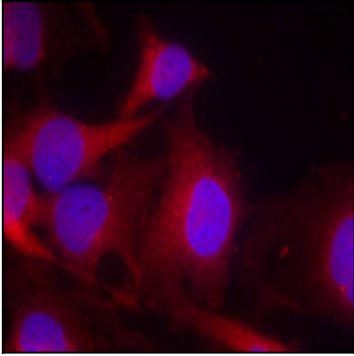


Figure 2: Immunofluorescence staining of methanol-fixed HeLa cells using PLCg2(Ab-753) Antibody 35-1525 .