

35-1517: Polyclonal Antibody to MEK1 (Ab-221)

Clonality :	Polyclonal
Application :	WB,IHC
Reactivity :	Human,Mouse
Gene :	MAP2K1
Gene ID :	5604
Uniprot ID :	Q02750
Format :	Purified
Alternative Name :	ERK activator kinase 1, MAP kinase kinase 1, MAP2K1, MAPK/ERK kinase 1, MAPKK 1
Isotype :	Rabbit IgG
Immunogen Information :	Peptide sequence around aa.219~223 (A-N-S-F-V) derived from Human MEK1.

Description

Catalyzes the concomitant phosphorylation of a threonine and a tyrosine residue in a Thr-Glu-Tyr sequence located in MAP kinases. Activates ERK1 and ERK2 MAP kinases.

Product Info

Amount :	50 μ l / 100 μ l
Content :	Supplied at 1.0mg/mL in phosphate buffered saline (without Mg ²⁺ and Ca ²⁺), pH 7.4, 150mM NaCl, 0.02% sodium azide and 50% glycerol.
Storage condition :	Store the antibody at 4°C, stable for 6 months. For long-term storage, store at -20°C. Avoid repeated freeze and thaw cycles.

Application Note

Predicted MW: 45kd, Western blotting: 1:500~1:1000, Immunohistochemistry: 1:50~1:100

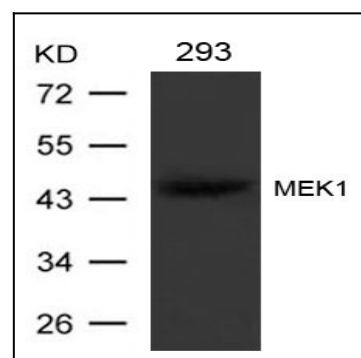


Figure 1: Western blot analysis of extracts from 293 cells using MEK1(Ab-221) Antibody 35-1517

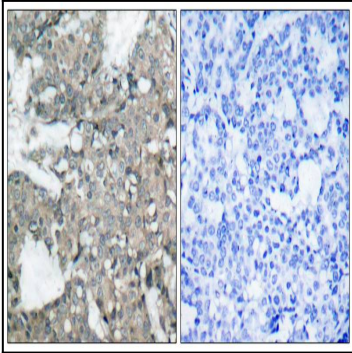


Figure 2: Immunohistochemical analysis of paraffin-embedded human breast carcinoma tissue using MEK1(Ab-221) Antibody 35-1517 (left) or the same antibody preincubated with blocking peptide(right).