

## 35-1504: Polyclonal Antibody to FKHR (Ab-319)

<b>Clonality :</b>	Polyclonal
<b>Application :</b>	WB,IHC
<b>Reactivity :</b>	Human,Mouse
<b>Gene :</b>	FOXO1
<b>Gene ID :</b>	2308
<b>Uniprot ID :</b>	Q12778
<b>Format :</b>	Purified
<b>Alternative Name :</b>	FKHR, FOXO1
<b>Isotype :</b>	Rabbit IgG
<b>Immunogen Information :</b>	Peptide sequence around aa. 317~321 (T-S-S-N-A) derived from Human FKHR.

### Description

Transcription factor.

### Product Info

<b>Amount :</b>	50 $\mu$ l / 100 $\mu$ l
<b>Content :</b>	Supplied at 1.0mg/mL in phosphate buffered saline (without Mg <sup>2+</sup> and Ca <sup>2+</sup> ), pH 7.4, 150mM NaCl, 0.02% sodium azide and 50% glycerol.
<b>Storage condition :</b>	Store the antibody at 4°C, stable for 6 months. For long-term storage, store at -20°C. Avoid repeated freeze and thaw cycles.

### Application Note

Predicted MW: 78-82 kd, Western blotting: 1:500~1:1000, Immunohistochemistry: 1:50~1:100

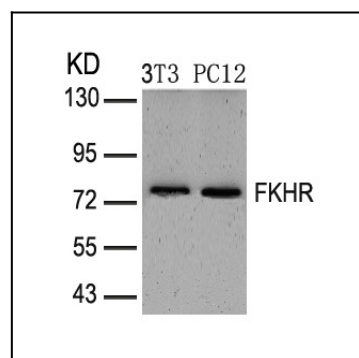


Figure 1: Western blot analysis of extracts from 3T3 and PC12 cells using FKHR (Ab-319) Antibody 35-1504 .

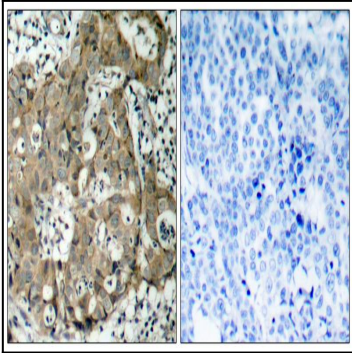


Figure 2: Immunohistochemical analysis of paraffin-embedded human breast carcinoma tissue using FKHR (Ab-319) Antibody 35-1504 (left) or the same antibody preincubated with blocking peptide(right).