

35-1482: Polyclonal Antibody to ASK1 (Ab-966)

Clonality :	Polyclonal
Application :	WB,IHC,IF
Reactivity :	Human,Mouse,Rat
Gene :	MAP3K5
Gene ID :	4217
Uniprot ID :	Q99683
Format :	Purified
Alternative Name :	ASK-1, M3K5, MAP3K5, MAPK/ERK kinase kinase 5, MAPKKK5
Isotype :	Rabbit IgG
Immunogen Information :	Peptide sequence around aa.964~968 (S-I-S-L-P) derived from Human ASK1.

Description

Component of a protein kinase signal transduction cascade. Phosphorylates and activates MAP2K4 and MAP2K6, which in turn activate the JNK and p38 MAP kinases, respectively. Overexpression induces apoptotic cell death. Zhang W, et al. (2005) J Biol Chem. 280(19): 19036-19044. Fujii K, et al. (2004) Oncogene. 23(29):5099-5104. Goldman EH, et al. (2004) J Biol Chem 2004 Mar 12; 279(11): 10442-10449. Zhang L, et al. (1999) Proc Natl Acad Sci U S A. 96(15): 8511-8515.

Product Info

Amount :	50 µl / 100 µl
Content :	Supplied at 1.0mg/mL in phosphate buffered saline (without Mg ²⁺ and Ca ²⁺), pH 7.4, 150mM NaCl, 0.02% sodium azide and 50% glycerol.
Storage condition :	Store the antibody at 4°C, stable for 6 months. For long-term storage, store at -20°C. Avoid repeated freeze and thaw cycles.

Application Note

Predicted MW: 155kd, Western blotting: 1:500~1:1000, Immunohistochemistry: 1:50~1:100, Immunofluorescence: 1:100~1:200

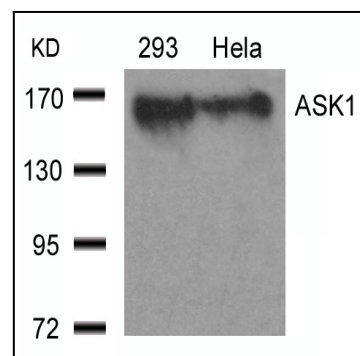


Figure 1: Western blot analysis of extracts from 293 and HeLa cells using ASK1 (Ab-966) Antibody 35-1482 .

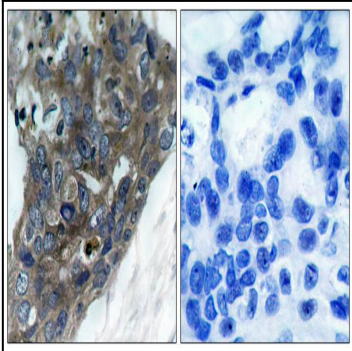


Figure 2: Immunohistochemical analysis of paraffin-embedded human breast carcinoma tissue using ASK1 (Ab-966) Antibody 35-1482 (left) or the same antibody preincubated with blocking peptide(right).

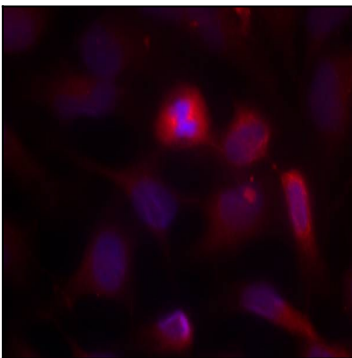


Figure 3: Immunofluorescence staining of methanol-fixed HeLa cells using ASK1 (Ab-966) Antibody 35-1482 .