

35-1479: Polyclonal Antibody to SEK1/MKK4 (Ab-261)

Clonality :	Polyclonal
Application :	IHC,IF
Reactivity :	Human,Mouse,Rat
Gene :	MAP2K4
Gene ID :	6416
Uniprot ID :	P45985
Format :	Purified
Alternative Name :	JNKK, JNKK1, MAP2K4, MAPK/ERK kinase 4, MAPKK 4
Isotype :	Rabbit IgG
Immunogen Information :	Peptide sequence around aa.259~263 (A-K-T-R-D) derived from Human SEK1/MKK4.

Description

Dual specificity kinase that activates the JUN kinases MAPK8 (JNK1) and MAPK9 (JNK2) as well as MAPK14 (p38) but not MAPK1 (ERK2) or MAPK3 (ERK1).

Product Info

Amount :	50 μ l / 100 μ l
Content :	Supplied at 1.0mg/mL in phosphate buffered saline (without Mg ²⁺ and Ca ²⁺), pH 7.4, 150mM NaCl, 0.02% sodium azide and 50% glycerol.
Storage condition :	Store the antibody at 4°C, stable for 6 months. For long-term storage, store at -20°C. Avoid repeated freeze and thaw cycles.

Application Note

Predicted MW: 44kd, Immunohistochemistry: 1:50~1:100, Immunofluorescence: 1:100~1:200

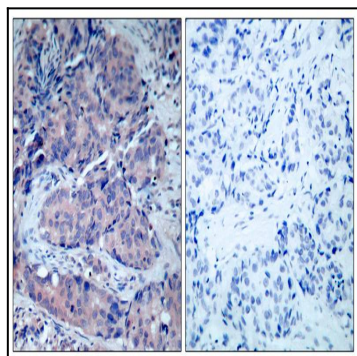


Figure 1: Immunohistochemical analysis of paraffin-embedded human breast carcinoma tissue using SEK1/MKK4 (Ab-261) Antibody 35-1479 (left) or the same antibody preincubated with blocking peptide(right).

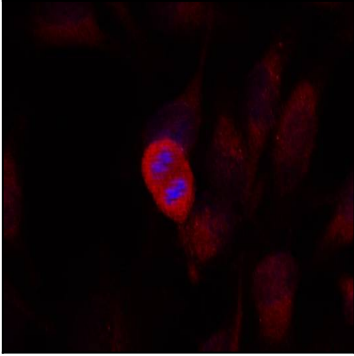


Figure 2: Immunofluorescence staining of methanol-fixed HeLa cells using SEK1/MKK4 (Ab-261) Antibody 35-1479 .