

## 35-1477: Polyclonal Antibody to PLC Gamma1 (Ab-783)

<b>Clonality :</b>	Polyclonal
<b>Application :</b>	WB
<b>Reactivity :</b>	Human,Mouse,Rat
<b>Gene :</b>	PLCG1
<b>Gene ID :</b>	5335
<b>Uniprot ID :</b>	P19174
<b>Format :</b>	Purified
<b>Alternative Name :</b>	Phosphoinositide phospholipase C, Phospholipase C-gamma-1
<b>Isotype :</b>	Rabbit IgG
<b>Immunogen Information :</b>	Peptide sequence around aa. 781~785 (G-F-Y-V-E) derived from Human PLCg1.

### Description

PLC-gamma is a major substrate for heparin-binding growth factor 1 (acidic fibroblast growth factor)-activated tyrosine kinase.

### Product Info

<b>Amount :</b>	50 µl / 100 µl
<b>Content :</b>	Supplied at 1.0mg/mL in phosphate buffered saline (without Mg <sup>2+</sup> and Ca <sup>2+</sup> ), pH 7.4, 150mM NaCl, 0.02% sodium azide and 50% glycerol.
<b>Storage condition :</b>	Store the antibody at 4°C, stable for 6 months. For long-term storage, store at -20°C. Avoid repeated freeze and thaw cycles.

### Application Note

Predicted MW: 155kd, Western blotting: 1:500~1:1000

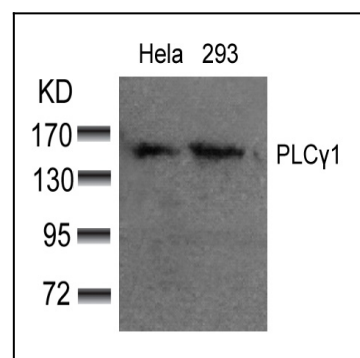


Figure 1: Western blot analysis of extracts from HeLa and 293 cells using PLCγ1 (Ab-783) Antibody 35-1477 .