

35-1476: Polyclonal Antibody to PKD/PKC (Ab-910)

Clonality :	Polyclonal
Application :	WB
Reactivity :	Human,Mouse
Gene :	PRKD1
Gene ID :	5587
Uniprot ID :	Q15139
Format :	Purified
Alternative Name :	nPKC-D1, Protein kinase D, Protein kinase C mu type, nPKC-mu
Isotype :	Rabbit IgG
Immunogen Information :	Peptide sequence around aa. 908~912 (R-V-S-I-L) derived from Human PKD/PKCm.

Description

Converts transient diacylglycerol (DAG) signals into prolonged physiological effects, downstream of PKC. Involved in resistance to oxidative stress through activation of NF-kappa-B.

Product Info

Amount :	50 μ l / 100 μ l
Content :	Supplied at 1.0mg/mL in phosphate buffered saline (without Mg ²⁺ and Ca ²⁺), pH 7.4, 150mM NaCl, 0.02% sodium azide and 50% glycerol.
Storage condition :	Store the antibody at 4°C, stable for 6 months. For long-term storage, store at -20°C. Avoid repeated freeze and thaw cycles.

Application Note

Predicted MW: 115kd, Western blotting: 1:500~1:1000

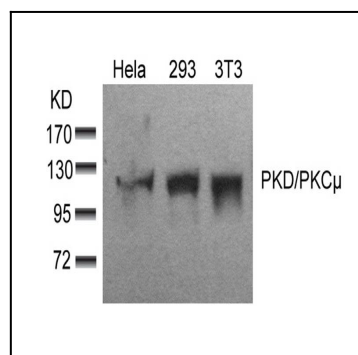


Figure 1: Western blot analysis of extracts from HeLa, 293 and 3T3 cells using PKD/PKC μ (Ab-910) Antibody 35-1476 .