

35-1474: Polyclonal Antibody to ASK1 (Ab-83)

Clonality :	Polyclonal
Application :	WB,IHC,IF
Reactivity :	Human
Gene :	MAP3K5
Gene ID :	4217
Uniprot ID :	Q99683
Format :	Purified
Alternative Name :	ASK-1, M3K5, MAP3K5, MAPK/ERK kinase kinase 5, MAPKKK5
Isotype :	Rabbit IgG
Immunogen Information :	Peptide sequence around aa.81~85 (G-S-S-V-G) derived from Human ASK1.

Description

Component of a protein kinase signal transduction cascade. Phosphorylates and activates MAP2K4 and MAP2K6, which in turn activate the JNK and p38 MAP kinases, respectively. Overexpression induces apoptotic cell death.

Product Info

Amount :	50 µl / 100 µl
Content :	Supplied at 1.0mg/mL in phosphate buffered saline (without Mg ²⁺ and Ca ²⁺), pH 7.4, 150mM NaCl, 0.02% sodium azide and 50% glycerol.
Storage condition :	Store the antibody at 4°C, stable for 6 months. For long-term storage, store at -20°C. Avoid repeated freeze and thaw cycles.

Application Note

Predicted MW: 155kd, Western blotting: 1:500~1:1000, Immunohistochemistry: 1:50~1:100, Immunofluorescence: 1:100~1:200

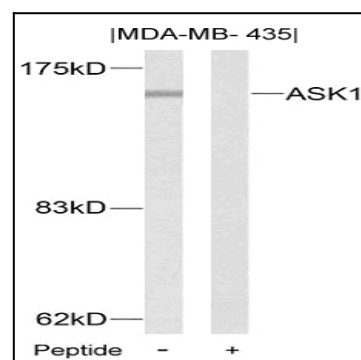


Figure 1: Western blot analysis of extracts from MDA-MB-435 cells using ASK1 (Ab-83) Antibody 35-1474 and the same antibody preincubated with blocking peptide.

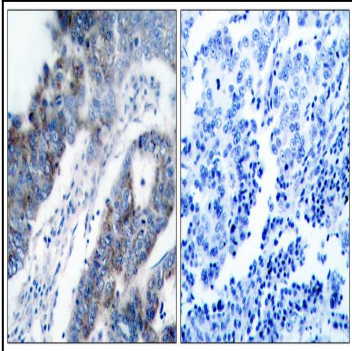


Figure 2: Immunohistochemical analysis of paraffin-embedded human breast carcinoma tissue using ASK1 (Ab-83) Antibody 35-1474 (left) or the same antibody preincubated with blocking peptide(right).

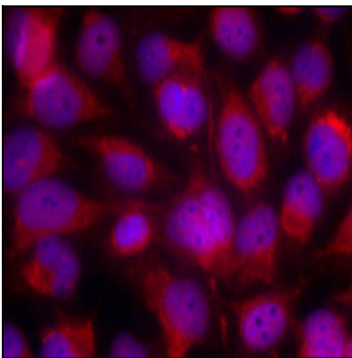


Figure 3: Immunofluorescence staining of methanol-fixed HeLa cells using ASK1 (Ab-83) Antibody 35-1474 .