

## 35-1469: Polyclonal Antibody to JAK1 (Ab-1022)

<b>Clonality :</b>	Polyclonal
<b>Application :</b>	IHC,WB
<b>Reactivity :</b>	Rat,Mouse,Human
<b>Gene :</b>	JAK1
<b>Gene ID :</b>	3716
<b>Uniprot ID :</b>	P23458
<b>Format :</b>	Purified
<b>Alternative Name :</b>	Janus kinase 1
<b>Isotype :</b>	Rabbit IgG
<b>Immunogen Information :</b>	Peptide sequence around aa. 1020~1024 (K-E-Y-Y-T) derived from Human JAK1.

### Description

Tyrosine kinase of the non-receptor type, involved in the IFN- $\alpha$ /beta/gamma signal pathway. Kinase partner for the interleukin (IL)-2 receptor.

### Product Info

<b>Amount :</b>	50 $\mu$ l / 100 $\mu$ l
<b>Content :</b>	Supplied at 1.0mg/mL in phosphate buffered saline (without Mg <sup>2+</sup> and Ca <sup>2+</sup> ), pH 7.4, 150mM NaCl, 0.02% sodium azide and 50% glycerol.
<b>Storage condition :</b>	Store the antibody at 4°C, stable for 6 months. For long-term storage, store at -20°C. Avoid repeated freeze and thaw cycles.

### Application Note

Predicted MW: 130kd, Western blotting: 1:500~1:1000, Immunohistochemistry: 1:50~1:100

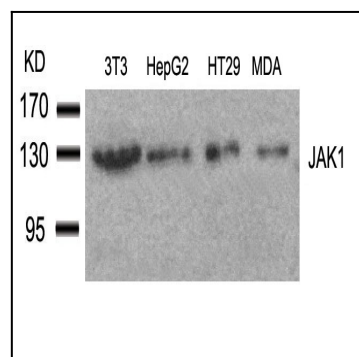


Figure 1: Western blot analysis of extracts from 3T3, HepG2, HT29 and MDA cells using JAK1 (Ab-1022) Antibody 35-1469 .

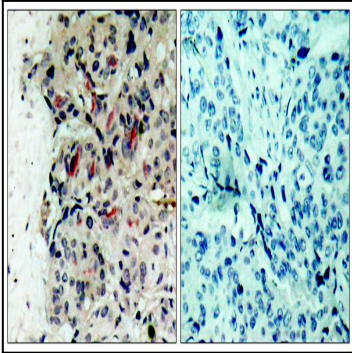


Figure 2: Immunohistochemical analysis of paraffin-embedded human breast carcinoma tissue using JAK1 (Ab-1022) Antibody 35-1469 (left) or the same antibody preincubated with blocking peptide(right).