

## 35-1468: Polyclonal Antibody to TYK2 (Ab-1054)

<b>Clonality :</b>	Polyclonal
<b>Application :</b>	IHC
<b>Reactivity :</b>	Human,Mouse,Rat
<b>Gene :</b>	TYK2
<b>Gene ID :</b>	7297
<b>Uniprot ID :</b>	P29597
<b>Format :</b>	Purified
<b>Alternative Name :</b>	tyrosine kinase 2, JTK1
<b>Isotype :</b>	Rabbit IgG
<b>Immunogen Information :</b>	Peptide sequence around aa.1052~1056 (H-E-Y-Y-R) derived from Human TYK2.

### Description

TYK2 encodes a member of the tyrosine kinase and, more specifically, the Janus kinases (JAKs) protein families. This protein associates with the cytoplasmic domain of type I and type II cytokine receptors and promulgate cytokine signals by phosphorylating receptor subunits. It is also component of both the type I and type III interferon signaling pathways. As such, it may play a role in anti-viral immunity. A mutation in this gene has been associated with hyperimmunoglobulin E syndrome (HIES) - a primary immunodeficiency characterized by elevated serum immunoglobulin E. Zheng H, et al. (2005) Mol Cell Proteomics. 4(6):721-730. Gauzzi MC, et al. (1996) J Biol Chem. 271(34): 20494-20500.

### Product Info

<b>Amount :</b>	50 µl / 100 µl
<b>Content :</b>	Supplied at 1.0mg/mL in phosphate buffered saline (without Mg <sup>2+</sup> and Ca <sup>2+</sup> ), pH 7.4, 150mM NaCl, 0.02% sodium azide and 50% glycerol.
<b>Storage condition :</b>	Store the antibody at 4°C, stable for 6 months. For long-term storage, store at -20°C. Avoid repeated freeze and thaw cycles.

### Application Note

Predicted MW: 140kd, Immunohistochemistry: 1:50~1:100

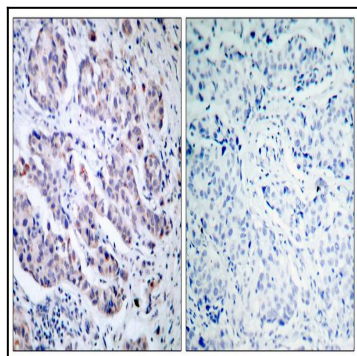


Figure 1: Immunohistochemical analysis of paraffin-embedded human breast carcinoma tissue using TYK2 (Ab-1054) Antibody 35-1468 (left) or the same antibody preincubated with blocking peptide(right).