

35-1459: Polyclonal Antibody to Paxillin (Ab-118)

Clonality :	Polyclonal
Application :	WB,IHC
Reactivity :	Human,Mouse,Rat
Gene :	PXN
Gene ID :	5829
Uniprot ID :	P49023
Format :	Purified
Alternative Name :	Paxillin; Pxn
Isotype :	Rabbit IgG
Immunogen Information :	Peptide sequence around aa. 116~120 (H-V-Y-S-F) derived from Human Paxillin.

Description

Cytoskeletal protein involved in actin-membrane attachment at sites of cell adhesion to the extracellular matrix (focal adhesion).

Product Info

Amount :	50 μ l / 100 μ l
Content :	Supplied at 1.0mg/mL in phosphate buffered saline (without Mg ²⁺ and Ca ²⁺), pH 7.4, 150mM NaCl, 0.02% sodium azide and 50% glycerol.
Storage condition :	Store the antibody at 4°C, stable for 6 months. For long-term storage, store at -20°C. Avoid repeated freeze and thaw cycles.

Application Note

Predicted MW: 68kd, Western blotting: 1:500~1:1000, Immunohistochemistry: 1:50~1:100

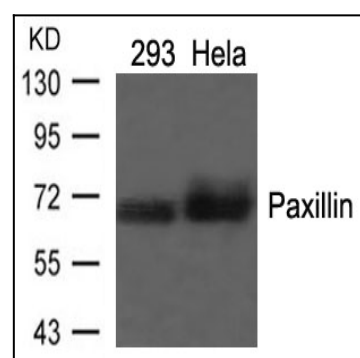


Figure 1: Western blot analysis of extracts from 293 and HeLa cells using Paxillin (Ab-118) Antibody 35-1459 .

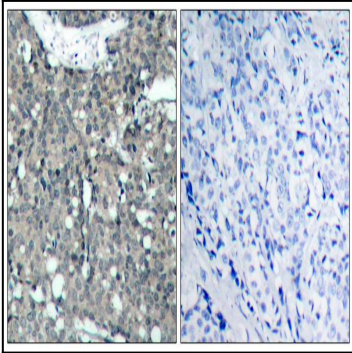


Figure 2: Immunohistochemical analysis of paraffin-embedded human breast carcinoma tissue using Paxillin (Ab-118) Antibody 35-1459 (left) or the same antibody preincubated with blocking peptide(right).