

## 35-1455: Polyclonal Antibody to G3BP-1 (Ab-232)

<b>Clonality :</b>	Polyclonal
<b>Application :</b>	WB,IHC
<b>Reactivity :</b>	Human
<b>Gene :</b>	G3BP1
<b>Gene ID :</b>	10146
<b>Uniprot ID :</b>	Q13283
<b>Format :</b>	Purified
<b>Alternative Name :</b>	G3BP, GAP SH3-domain binding protein 1
<b>Isotype :</b>	Rabbit IgG
<b>Immunogen Information :</b>	Peptide sequence around aa.230~234 (S-S-S-P-A) derived from Human G3BP-1.

### Description

May be a regulated effector of stress granule assembly. Phosphorylation-dependent sequence-specific endoribonuclease in vitro. Cleaves exclusively between cytosine and adenine and cleaves MYC mRNA preferentially at the 3'-UTR. ATP- and magnesium-dependent helicase. Unwinds preferentially partial DNA and RNA duplexes having a 17 bp annealed portion and either a hanging 3' tail or hanging tails at both 5'- and 3'-ends. Unwinds DNA/DNA, RNA/DNA, and RNA/RNA substrates with comparable efficiency. Acts unidirectionally by moving in the 5' to 3' direction along the bound single-stranded DNA.

### Product Info

<b>Amount :</b>	50 µl / 100 µl
<b>Content :</b>	Supplied at 1.0mg/mL in phosphate buffered saline (without Mg <sup>2+</sup> and Ca <sup>2+</sup> ), pH 7.4, 150mM NaCl, 0.02% sodium azide and 50% glycerol.
<b>Storage condition :</b>	Store the antibody at 4°C, stable for 6 months. For long-term storage, store at -20°C. Avoid repeated freeze and thaw cycles.

### Application Note

Predicted MW: 60kd, Western blotting: 1:500~1:1000, Immunohistochemistry: 1:50~1:100

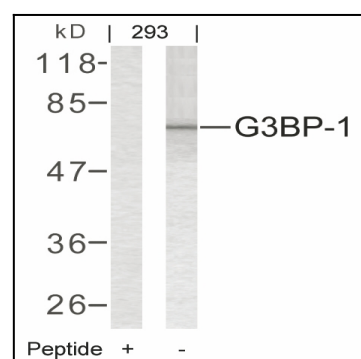


Figure 1: Western blot analysis of extracts from 293 cells using G3BP-1 (Ab-232) Antibody 35-1455 and the same antibody preincubated with blocking peptide.

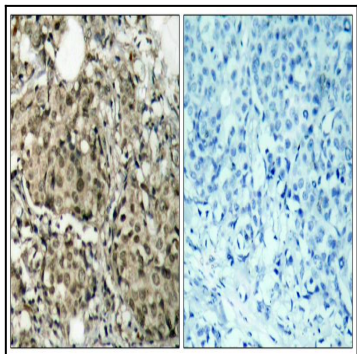


Figure 2: Immunohistochemical analysis of paraffin-embedded human breast carcinoma tissue using G3BP-1 (Ab-232) Antibody 35-1455 (left) or the same antibody preincubated with blocking peptide(right).