

35-1434: Polyclonal Antibody to IGF-1R (Ab-1161)

Clonality :	Polyclonal
Application :	WB,IHC,IF
Reactivity :	Human,Mouse,Rat
Gene :	IGF1R
Gene ID :	3480
Uniprot ID :	P08069
Format :	Purified
Alternative Name :	Insulin-like growth factor I receptor, CD221, IGF1R, kinase IGF1R
Isotype :	Rabbit IgG
Immunogen Information :	Peptide sequence around aa.1159~1163 (D-I-Y-E-T) derived from Human IGF-1R .

Description

This receptor binds insulin-like growth factor 1 (IGF1) with a high affinity and IGF2 with a lower affinity. It has a tyrosine-protein kinase activity, which is necessary for the activation of the IGF1-stimulated downstream signaling cascade. When present in a hybrid receptor with INSR, binds IGF1.

Product Info

Amount :	50 μ l / 100 μ l
Content :	Supplied at 1.0mg/mL in phosphate buffered saline (without Mg ²⁺ and Ca ²⁺), pH 7.4, 150mM NaCl, 0.02% sodium azide and 50% glycerol.
Storage condition :	Store the antibody at 4°C, stable for 6 months. For long-term storage, store at -20°C. Avoid repeated freeze and thaw cycles.

Application Note

Predicted MW: 200 95 kd, Western blotting: 1:500~1:1000, Immunohistochemistry: 1:50~1:100, Immunofluorescence: 1:100~1:200

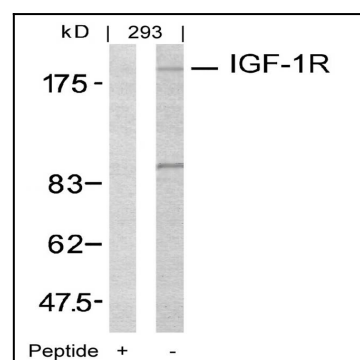


Figure 1: Western blot analysis of extracts from 293 cells using IGF-1R (Ab-1161) Antibody 35-1434 and the same antibody preincubated with blocking peptide.

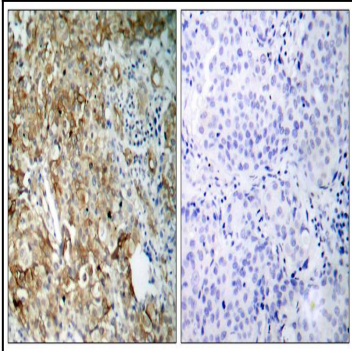


Figure 2: Immunohistochemical analysis of paraffin-embedded human breast carcinoma tissue using IGF-1R(Ab-1161) Antibody 35-1434 (left) or the same antibody preincubated with blocking peptide(right).

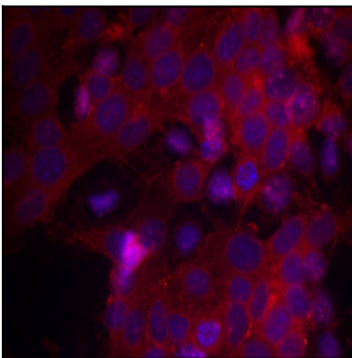


Figure 3: Immunofluorescence staining of methanol-fixed MCF cells using IGF-1R(Ab-1161) Antibody 35-1434 .