

35-1422: Polyclonal Antibody to Estrogen Receptor- Alpha (Ab-167)

Clonality :	Polyclonal
Application :	WB,IHC,IF
Reactivity :	Human
Gene :	ESR1
Gene ID :	2099
Uniprot ID :	P03372
Format :	Purified
Alternative Name :	ER, ESR, ESR1, ESTR, ESTRA
Isotype :	Rabbit IgG
Immunogen Information :	Peptide sequence around aa.165~169 (L-A-S-T-N) derived from Human Estrogen Receptor-a.

Description

Nuclear hormone receptor. The steroid hormones and their receptors are involved in the regulation of eukaryotic gene expression and affect cellular proliferation and differentiation in target tissues.

Product Info

Amount :	50 µl / 100 µl
Content :	Supplied at 1.0mg/mL in phosphate buffered saline (without Mg ²⁺ and Ca ²⁺), pH 7.4, 150mM NaCl, 0.02% sodium azide and 50% glycerol.
Storage condition :	Store the antibody at 4°C, stable for 6 months. For long-term storage, store at -20°C. Avoid repeated freeze and thaw cycles.

Application Note

Predicted MW: 66kd, Western blotting: 1:500~1:1000, Immunohistochemistry: 1:50~1:100, Immunofluorescence: 1:100~1:200

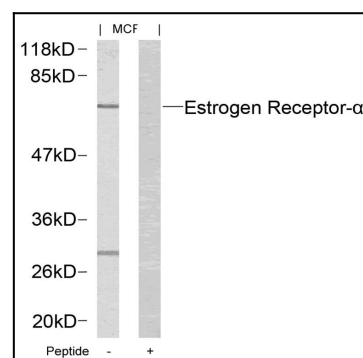


Figure 1: Western blot analysis of extracts from MCF cells using Estrogen Receptor-a(Ab-167) Antibody 35-1422 and the same antibody preincubated with blocking peptide.

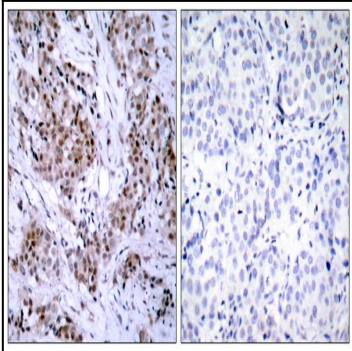


Figure 2: Immunohistochemical analysis of paraffin-embedded human breast carcinoma tissue using Estrogen Receptor-a(Ab-167) Antibody 35-1422 (left) or the same antibody preincubated with blocking peptide(right).

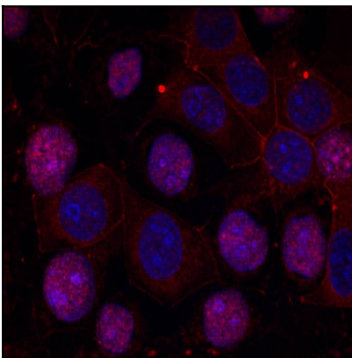


Figure 3: Immunofluorescence staining of methanol-fixed MCF cells using Estrogen Receptor-a(Ab-167) Antibody 35-1422 .