

## 35-1415: Polyclonal Antibody to BCL-XL (Ab-62)

<b>Clonality :</b>	Polyclonal
<b>Application :</b>	WB
<b>Reactivity :</b>	Human,Mouse,Rat
<b>Gene :</b>	BAD
<b>Gene ID :</b>	572
<b>Uniprot ID :</b>	Q92934
<b>Format :</b>	Purified
<b>Alternative Name :</b>	BAD, BBC6, BCL2L8
<b>Isotype :</b>	Rabbit IgG
<b>Immunogen Information :</b>	Peptide sequence around aa.60~64 (A-D-S-P-A) derived from human BCL-XL .

### Description

Potent inhibitor of cell death. Isoform Bcl-X(L) anti-apoptotic activity is inhibited by association with SIVA isoform 1. Inhibits activation of caspases By similarity. Appears to regulate cell death by blocking the voltage-dependent anion channel (VDAC) by binding to it and preventing the release of the caspase activator, cytochrome c, from the mitochondrial membrane. The Bcl-X(S) isoform promotes apoptosis.

### Product Info

<b>Amount :</b>	50 µl / 100 µl
<b>Content :</b>	Supplied at 1.0mg/mL in phosphate buffered saline (without Mg <sup>2+</sup> and Ca <sup>2+</sup> ), pH 7.4, 150mM NaCl, 0.02% sodium azide and 50% glycerol.
<b>Storage condition :</b>	Store the antibody at 4°C, stable for 6 months. For long-term storage, store at -20°C. Avoid repeated freeze and thaw cycles.

### Application Note

Predicted MW: 30kd, Western blotting: 1:500~1:1000

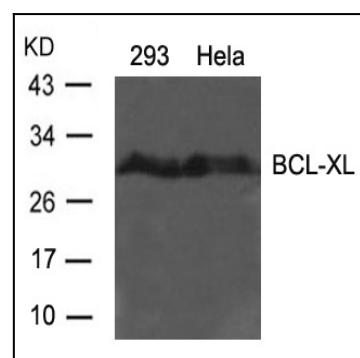


Figure 1: Western blot analysis of extracts from 293 and HeLa cells using BCL-XL(Ab-62) Antibody 35-1415 .