

35-1413: Polyclonal Antibody to BCL-2 (Ab-56)

Clonality :	Polyclonal
Application :	WB,IHC,IF
Reactivity :	Human
Gene :	BCL2
Gene ID :	596
Uniprot ID :	P10415
Format :	Purified
Alternative Name :	BCL2
Isotype :	Rabbit IgG
Immunogen Information :	Peptide sequence around aa. 54~58 (G-H-T-P-H) derived from Human BCL-2.

Description

Suppresses apoptosis in a variety of cell systems including factor-dependent lymphohematopoietic and neural cells. Regulates cell death by controlling the mitochondrial membrane permeability. Appears to function in a feedback loop system with caspases. Inhibits caspase activity either by preventing the release of cytochrome c from the mitochondria and/or by binding to the apoptosis-activating factor (APAF-1).

Product Info

Amount :	50 μ l / 100 μ l
Content :	Supplied at 1.0mg/mL in phosphate buffered saline (without Mg ²⁺ and Ca ²⁺), pH 7.4, 150mM NaCl, 0.02% sodium azide and 50% glycerol.
Storage condition :	Store the antibody at 4°C, stable for 6 months. For long-term storage, store at -20°C. Avoid repeated freeze and thaw cycles.

Application Note

Predicted MW: 26kd, Western blotting: 1:500~1:1000, Immunohistochemistry: 1:50~1:100, Immunofluorescence: 1:100~1:200

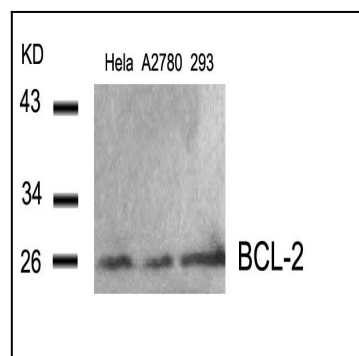


Figure 1: Western blot analysis of extracts from HeLa, A2780 and 293 cells using BCL-2(Ab-56) Antibody 35-1413 .

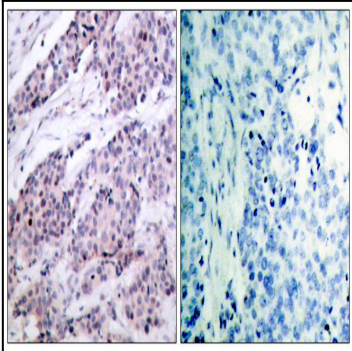


Figure 2: Immunohistochemical analysis of paraffin-embedded human breast carcinoma tissue using BCL-2(Ab-56) Antibody 35-1413 (left) or the same antibody preincubated with blocking peptide(right).

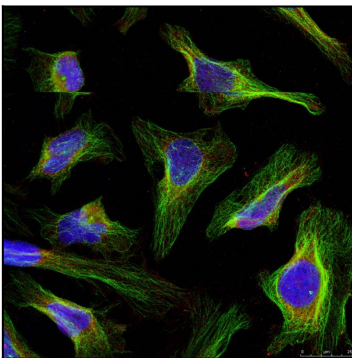


Figure 3: Immunofluorescence staining of methanol-fixed HeLa cells using BCL-2(Ab-56) Antibody 35-1413 .