

## 35-1407: Polyclonal Antibody to CREB (Ab-133)

<b>Clonality :</b>	Polyclonal
<b>Application :</b>	WB,IHC
<b>Reactivity :</b>	Human,Mouse
<b>Gene :</b>	CREB1
<b>Gene ID :</b>	1385
<b>Uniprot ID :</b>	P16220
<b>Format :</b>	Purified
<b>Alternative Name :</b>	CREB-1, CREB1
<b>Isotype :</b>	Rabbit IgG
<b>Immunogen Information :</b>	Peptide sequence around aa. 131~135 (R-P-S-Y-R) derived from Human CREB.

### Description

This protein binds the cAMP response element (CRE), a sequence present in many viral and cellular promoters. CREB stimulates transcription on binding to the CRE. Transcription activation is enhanced by the TORC coactivators which act independently of Ser-133 phosphorylation. Implicated in synchronization of circadian rhythmicity.

### Product Info

<b>Amount :</b>	50 $\mu$ l / 100 $\mu$ l
<b>Content :</b>	Supplied at 1.0mg/mL in phosphate buffered saline (without Mg <sup>2+</sup> and Ca <sup>2+</sup> ), pH 7.4, 150mM NaCl, 0.02% sodium azide and 50% glycerol.
<b>Storage condition :</b>	Store the antibody at 4°C, stable for 6 months. For long-term storage, store at -20°C. Avoid repeated freeze and thaw cycles.

### Application Note

Predicted MW: 43kd, Western blotting: 1:500~1:1000, Immunohistochemistry: 1:50~1:100

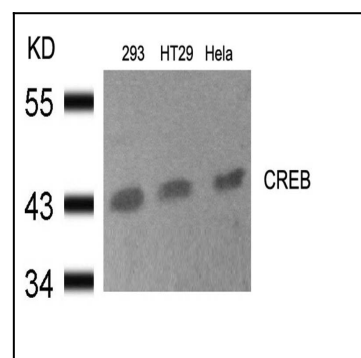


Figure 1: Western blot analysis of extracts from 293, HT29 and HeLa cells using CREB(Ab-133) Antibody 35-1407 .

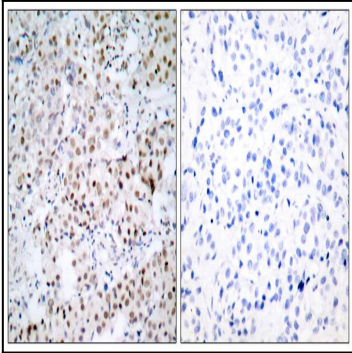


Figure 2: Immunohistochemical analysis of paraffin-embedded human breast carcinoma tissue using CREB(Ab-133) Antibody 35-1407 (left) or the same antibody preincubated with blocking peptide(right).