

35-1406: Polyclonal Antibody to STAT6 (Ab-645)

| | |
|--------------------------------|--|
| Clonality : | Polyclonal |
| Application : | WB,IHC |
| Reactivity : | Human |
| Gene : | STAT6 |
| Gene ID : | 6778 |
| Uniprot ID : | P42226 |
| Format : | Purified |
| Alternative Name : | IL-4-STAT, STAT6B, STAT6C |
| Isotype : | Rabbit IgG |
| Immunogen Information : | Peptide sequence around aa.643~647 (P-A-T-I-K) derived from Human STAT6. |

Description

Carries out a dual function: signal transduction and activation of transcription. Involved in interleukin-4 signalling.

Product Info

| | |
|----------------------------|--|
| Amount : | 50 μ l / 100 μ l |
| Content : | Supplied at 1.0mg/mL in phosphate buffered saline (without Mg ²⁺ and Ca ²⁺), pH 7.4, 150mM NaCl, 0.02% sodium azide and 50% glycerol. |
| Storage condition : | Store the antibody at 4°C, stable for 6 months. For long-term storage, store at -20°C. Avoid repeated freeze and thaw cycles. |

Application Note

Predicted MW: 110kd, Western blotting: 1:500~1:1000, Immunohistochemistry: 1:50~1:100

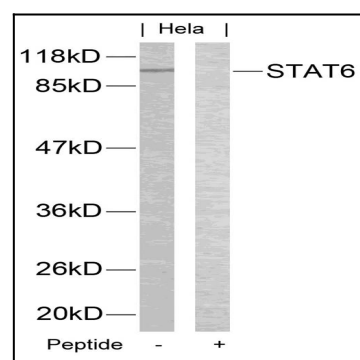


Figure 1: Western blot analysis of extracts from HeLa cells using STAT6(Ab-645) Antibody 35-1406 and the same antibody preincubated with blocking peptide.

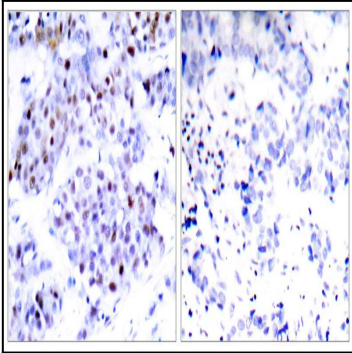


Figure 2: Immunohistochemical analysis of paraffin-embedded human breast carcinoma tissue using STAT6(Ab-645) Antibody 35-1406 (left) or the same antibody preincubated with blocking peptide(right).