

35-1405: Polyclonal Antibody to STAT6 (Ab-641)

Clonality :	Polyclonal
Application :	WB,IHC
Reactivity :	Human
Gene :	STAT6
Gene ID :	6778
Uniprot ID :	P42226
Format :	Purified
Alternative Name :	IL-4 Stat
Isotype :	Rabbit IgG
Immunogen Information :	Peptide sequence around aa.639~643 (R-G-Y-V-P) derived from Human STAT6.

Description

STAT6 is a member of the STAT family of transcription factors. In response to cytokines and growth factors, STAT family members are phosphorylated by the receptor-associated kinases, and then form homo- or heterodimers that translocate to the cell nucleus where they act as transcription activators. By screening an embryonic lung fibroblast cDNA library with a wildtype STAT6 probe, 2 variant cDNAs were identified, which were termed STAT6B and STAT6C, encoding an N-terminal 110-amino acid truncation and a 27-amino acid deletion in the SH2 domain, respectively. All the three variants are ubiquitously expressed with STAT6B expression greatest in spleen and STAT6C expression greatest in lung. STAT6B resembles an attenuated STAT6, but that STAT6C inhibits IL-4-mediated mitogenesis and cell surface antigen expression, and is not tyrosine phosphorylated Nelms K, et al. (1999) Annu Rev Immunol. 17:701-738. Malabarba M G, et al. (1996) Biochem. J. 319:865-872. Hou J, et al. (1994) Science. 265:1701-1706. Quelle F W, et al. (1995) Mol Cell Biol. 15: 3336-3343. Takeda K, et al. (1996) Nature. 380: 627-630.

Product Info

Amount :	50 µl / 100 µl
Content :	Supplied at 1.0mg/mL in phosphate buffered saline (without Mg ²⁺ and Ca ²⁺), pH 7.4, 150mM NaCl, 0.02% sodium azide and 50% glycerol.
Storage condition :	Store the antibody at 4°C, stable for 6 months. For long-term storage, store at -20°C. Avoid repeated freeze and thaw cycles.

Application Note

Predicted MW: 110kd, Western blotting: 1:500~1:1000, Immunohistochemistry: 1:50~1:100

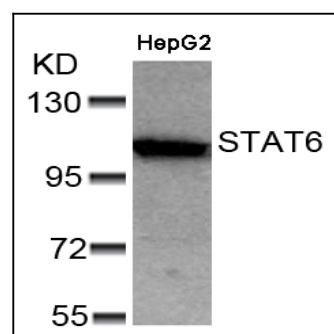


Figure 1: Western blot analysis of extracts from HepG2 cells using STAT6(Ab-641) Antibody 35-1405 .

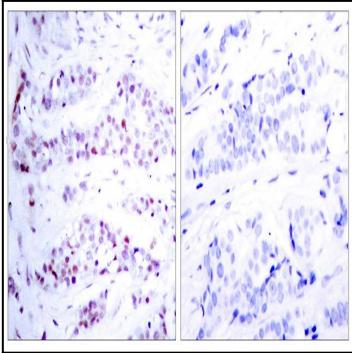


Figure 2: Immunohistochemical analysis of paraffin-embedded human breast carcinoma tissue using STAT6(Ab-641) Antibody 35-1405 (left) or the same antibody preincubated with blocking peptide(right).