

35-1403: Polyclonal Antibody to STAT5A (Ab-694)

| | |
|--------------------------------|--|
| Clonality : | Polyclonal |
| Application : | WB,IHC |
| Reactivity : | Human,Mouse,Rat |
| Gene : | STAT5A |
| Gene ID : | 6776 |
| Uniprot ID : | P42229 |
| Format : | Purified |
| Alternative Name : | MGF,MPF,Mammary gland factor,STA5A,STAT5 |
| Isotype : | Rabbit IgG |
| Immunogen Information : | Peptide sequence around aa. 692~696 (D-G-Y-V-K) derived from Human STAT5A. |

Description

Carries out a dual function: signal transduction and activation of transcription. Binds to the GAS element and activates PRL-induced transcription.

Product Info

| | |
|----------------------------|--|
| Amount : | 50 µl / 100 µl |
| Content : | Supplied at 1.0mg/mL in phosphate buffered saline (without Mg ²⁺ and Ca ²⁺), pH 7.4, 150mM NaCl, 0.02% sodium azide and 50% glycerol. |
| Storage condition : | Store the antibody at 4°C, stable for 6 months. For long-term storage, store at -20°C. Avoid repeated freeze and thaw cycles. |

Application Note

Predicted MW: 90kd, Western blotting: 1:500~1:1000, Immunohistochemistry: 1:50~1:100

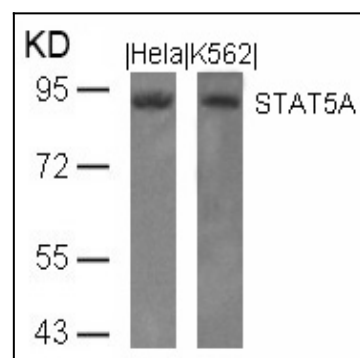


Figure 1: Western blot analysis of extracts from HeLa and K562 cells using STAT5A(Ab-694) Antibody 35-1403 .

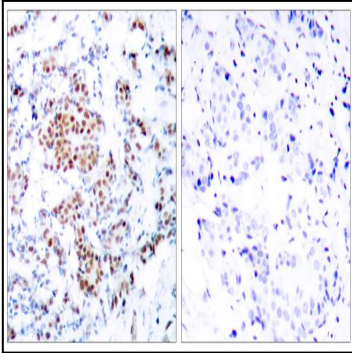


Figure 2: Immunohistochemical analysis of paraffin-embedded human breast carcinoma tissue using STAT5A(Ab-694) Antibody 35-1403 (left) or the same antibody preincubated with blocking peptide(right).