

35-1402: Polyclonal Antibody to STAT4 (Ab-693)

Clonality :	Polyclonal
Application :	WB,IHC
Reactivity :	Human,Mouse,Rat
Gene :	STAT4
Gene ID :	6775
Uniprot ID :	Q14765
Format :	Purified
Alternative Name :	SLEB11
Isotype :	Rabbit IgG
Immunogen Information :	Peptide sequence around aa.691~695 (K-G-Y-V-P) derived from Human STAT4.

Description

Carries out a dual function: signal transduction and activation of transcription. Involved in IL12 signaling.

Product Info

Amount :	50 μ l / 100 μ l
Content :	Supplied at 1.0mg/mL in phosphate buffered saline (without Mg ²⁺ and Ca ²⁺), pH 7.4, 150mM NaCl, 0.02% sodium azide and 50% glycerol.
Storage condition :	Store the antibody at 4°C, stable for 6 months. For long-term storage, store at -20°C. Avoid repeated freeze and thaw cycles.

Application Note

Predicted MW: 85kd, Western blotting: 1:500~1:1000, Immunohistochemistry: 1:50~1:100

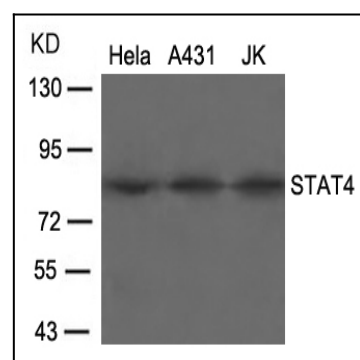


Figure 1: Western blot analysis of extracts from HeLa, A431 and JK cells using STAT4(Ab-693) Antibody 35-1402 .

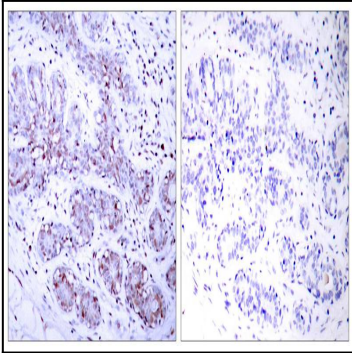


Figure 2: Immunohistochemical analysis of paraffin-embedded human breast carcinoma tissue using STAT4(Ab-693) Antibody 35-1402 (left) or the same antibody preincubated with blocking peptide(right).