

35-1390: Polyclonal Antibody to ATF2 (Ab-112 or 94) (Discontinued)

Clonality :	Polyclonal
Application :	IHC,WB
Reactivity :	Rat,Mouse,Human
Gene :	ATF2
Gene ID :	1386
Uniprot ID :	P15336
Format :	Purified
Alternative Name :	CREB2, CREBP1
Isotype :	Rabbit IgG
Immunogen Information :	Peptide sequence around aa.110~114 or 92~96 (D-L-S-P-L) derived from Human ATF2.

Description

Transcriptional activator, probably constitutive, which binds to the cAMP-responsive element (CRE) (consensus: 5'-GTGACGT[AC][AG]-3'), a sequence present in many viral and cellular promoters. Interaction with JUN redirects JUN to bind to CRES preferentially over the 12-O-tetradecanoylphorbol-13-acetate response elements (TRES) as part of an ATF2-c-Jun complex.

Product Info

Amount :	50 µg / 100 µg
Content :	Supplied at 1.0mg/mL in phosphate buffered saline (without Mg ²⁺ and Ca ²⁺), pH 7.4, 150mM NaCl, 0.02% sodium azide and 50% glycerol.
Storage condition :	Store the antibody at 4°C, stable for 6 months. For long-term storage, store at -20°C. Avoid repeated freeze and thaw cycles.

Application Note

Predicted MW: 65-75 kd, Western blotting: 1:500~1:1000, Immunohistochemistry: 1:50~1:100

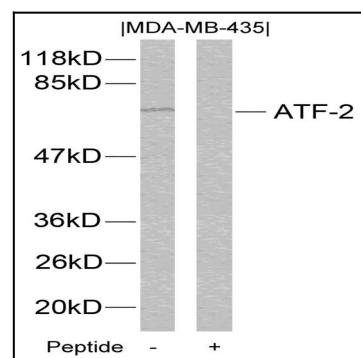


Figure 1: Western blot analysis of extracts from MDA-MB-435 cells using ATF2(Ab-112 or 94) Antibody 35-1390 and the same antibody preincubated with blocking peptide.

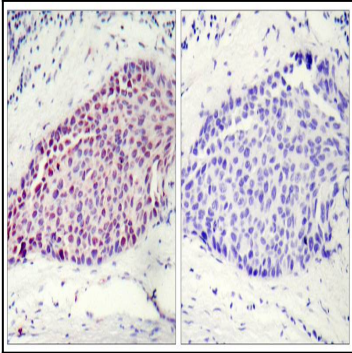


Figure 2: Immunohistochemical analysis of paraffin-embedded human breast carcinoma tissue using ATF2(Ab-112 or 94) Antibody 35-1390 (left) or the same antibody preincubated with blocking peptide(right).