

## 35-1385: Polyclonal Antibody to JunD (Ab-255)

<b>Clonality :</b>	Polyclonal
<b>Application :</b>	WB,IHC,IF
<b>Reactivity :</b>	Human
<b>Gene :</b>	JUND
<b>Gene ID :</b>	3727
<b>Uniprot ID :</b>	P17535
<b>Format :</b>	Purified
<b>Alternative Name :</b>	AP-1
<b>Isotype :</b>	Rabbit IgG
<b>Immunogen Information :</b>	Peptide sequence around aa. 253~257 (G-E-S-P-P) derived from Human JunD.

### Description

Binds an AP-1 site and upon cotransfection stimulates the activity of a promoter that bears an AP-1 site.

### Product Info

<b>Amount :</b>	50 $\mu$ l / 100 $\mu$ l
<b>Content :</b>	Supplied at 1.0mg/mL in phosphate buffered saline (without Mg <sup>2+</sup> and Ca <sup>2+</sup> ), pH 7.4, 150mM NaCl, 0.02% sodium azide and 50% glycerol.
<b>Storage condition :</b>	Store the antibody at 4°C, stable for 6 months. For long-term storage, store at -20°C. Avoid repeated freeze and thaw cycles.

### Application Note

Predicted MW: 38kd, Western blotting: 1:500~1:1000, Immunohistochemistry: 1:50~1:100, Immunofluorescence: 1:100~1:200

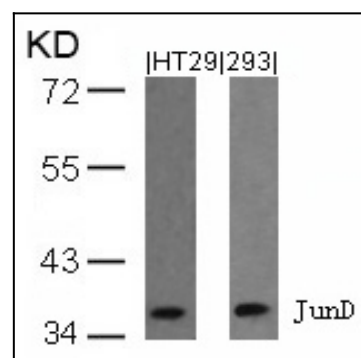


Figure 1: Western blot analysis of extracts from HT29 and 293 cells using JunD(Ab-255) Antibody 35-1385 .

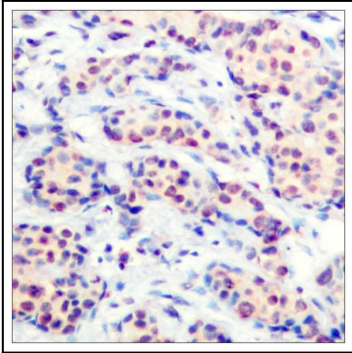


Figure 2: Immunohistochemical analysis of paraffin-embedded human breast carcinoma tissue using JunD(Ab-255) Antibody 35-1385

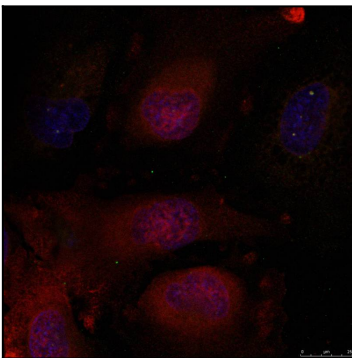


Figure 3: Immunofluorescence staining of methanol-fixed HeLa cells using JunD(Ab-255) Antibody 35-1385 .