

35-1377: Polyclonal Antibody to Rel (Ab-503)

Clonality :	Polyclonal
Application :	IF
Reactivity :	Human
Format :	Purified
Alternative Name :	C-Rel
Isotype :	Rabbit IgG
Immunogen Information :	Peptide sequence around aa.501~505 (T-S-S-D-S) derived from Human Rel.

Description

The REL gene encodes c-Rel, a transcription factor that is a member of the Rel/NF κ B family, which also includes RELA (MIM 164014), RELB (604758), NF κ B1 (MIM 164011), and NF κ B2 (MIM 164012). These proteins are related through a highly conserved N-terminal region termed the 'Rel domain,' which is responsible for DNA binding, dimerization, nuclear localization, and binding to the NF κ B inhibitor (MIM 164008) (Belguise and Sonenshein, 2007 (PubMed18037997)).

Product Info

Amount :	50 μ l / 100 μ l
Content :	Supplied at 1.0mg/mL in phosphate buffered saline (without Mg ²⁺ and Ca ²⁺), pH 7.4, 150mM NaCl, 0.02% sodium azide and 50% glycerol.
Storage condition :	Store the antibody at 4°C, stable for 6 months. For long-term storage, store at -20°C. Avoid repeated freeze and thaw cycles.

Application Note

Predicted MW: 78kd, Immunofluorescence: 1:100~1:200

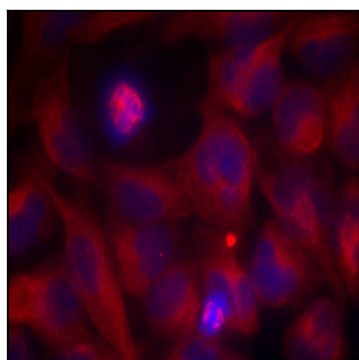


Figure 1: Immunofluorescence staining of methanol-fixed HeLa cells using Rel(Ab-503) Antibody 35-1377 .