

35-1365: Polyclonal Antibody to GSK3 Alpha (Ab-21)

| | |
|--------------------------------|--|
| Clonality : | Polyclonal |
| Application : | WB,IHC,IF |
| Reactivity : | Human,Mouse,Rat |
| Gene : | GSK3A |
| Gene ID : | 2931 |
| Uniprot ID : | P49840 |
| Format : | Purified |
| Alternative Name : | Factor A, GSK-3 alpha, kinase GSK3-alpha |
| Isotype : | Rabbit IgG |
| Immunogen Information : | Peptide sequence around aa.19~23 (T-S-S-F-A) derived from Human GSK3a. |

Description

Implicated in the hormonal control of several regulatory proteins including glycogen synthase, MYB and the transcription factor JUN

Product Info

| | |
|----------------------------|--|
| Amount : | 50 μ l / 100 μ l |
| Content : | Supplied at 1.0mg/mL in phosphate buffered saline (without Mg ²⁺ and Ca ²⁺), pH 7.4, 150mM NaCl, 0.02% sodium azide and 50% glycerol. |
| Storage condition : | Store the antibody at 4°C, stable for 6 months. For long-term storage, store at -20°C. Avoid repeated freeze and thaw cycles. |

Application Note

Predicted MW: 51kd, Western blotting: 1:500~1:1000, Immunohistochemistry: 1:50~1:100, Immunofluorescence: 1:100~1:200

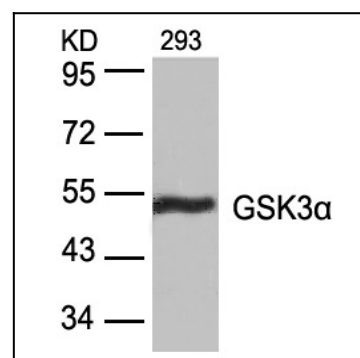


Figure 1: Western blot analysis of extracts from 293 cells using GSK3a(Ab-21) Antibody 35-1365 .

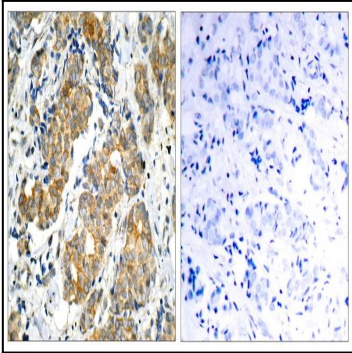


Figure 2: Immunohistochemical analysis of paraffin-embedded human breast carcinoma tissue using GSK3a(Ab-21) Antibody 35-1365 (left) or the same antibody preincubated with blocking peptide(right).

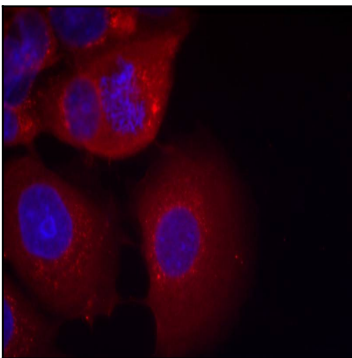


Figure 3: Immunofluorescence staining of methanol-fixed MCF7 cells using GSK3a(Ab-21) Antibody 35-1365 .