

## 35-1360: Polyclonal Antibody to GSK3beta (Ab-9)

<b>Clonality :</b>	Polyclonal
<b>Application :</b>	WB,IHC,IF
<b>Reactivity :</b>	Human,Mouse,Rat
<b>Gene :</b>	GSK3B
<b>Gene ID :</b>	2932
<b>Uniprot ID :</b>	P49841
<b>Format :</b>	Purified
<b>Alternative Name :</b>	Factor A,GSK-3 beta,Protein kinase GSK-3-beta,kinase GSK-3 beta
<b>Isotype :</b>	Rabbit IgG
<b>Immunogen Information :</b>	Peptide sequence around aa.7~11 (T-T-S-F-A) derived from Human GSK3b.

### Description

Participates in the Wnt signaling pathway. Implicated in the hormonal control of several regulatory proteins including glycogen synthase, MYB and the transcription factor JUN. Phosphorylates JUN at sites proximal to its DNA-binding domain, thereby reducing its affinity for DNA. Phosphorylates MUC1 in breast cancer cells, and decreases the interaction of MUC1 with CTNNB1/beta-catenin. Phosphorylates CTNNB1/beta-catenin.

### Product Info

<b>Amount :</b>	50 $\mu$ l / 100 $\mu$ l
<b>Content :</b>	Supplied at 1.0mg/mL in phosphate buffered saline (without Mg <sup>2+</sup> and Ca <sup>2+</sup> ), pH 7.4, 150mM NaCl, 0.02% sodium azide and 50% glycerol.
<b>Storage condition :</b>	Store the antibody at 4°C, stable for 6 months. For long-term storage, store at -20°C. Avoid repeated freeze and thaw cycles.

### Application Note

Predicted MW: 46kd, Western blotting: 1:500~1:1000, Immunohistochemistry: 1:50~1:100, Immunofluorescence: 1:100~1:200

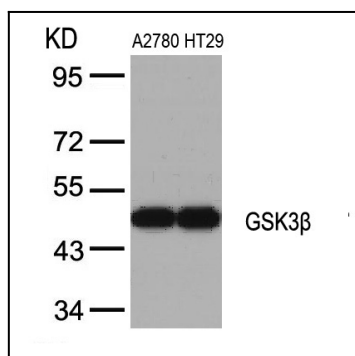


Figure 1: Western blot analysis of extracts from A2780 and HT29 cells using GSK3b(Ab-9) Antibody 35-1360 .

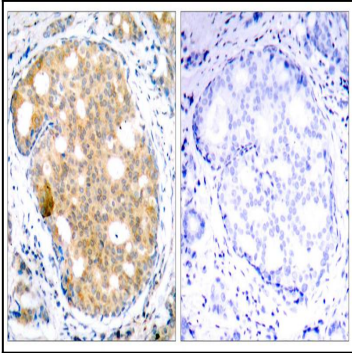


Figure 2: Immunohistochemical analysis of paraffin-embedded human breast carcinoma tissue using GSK3b(Ab-9) Antibody 35-1360 (left) or the same antibody preincubated with blocking peptide(right).

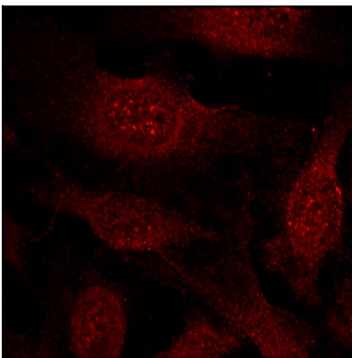


Figure 3: Immunofluorescence staining of methanol-fixed HeLa cells showing cytoplasmic and nuclear staining using GSK3b(Ab-9) Antibody 35-1360 .