

## 35-1357: Polyclonal Antibody to FBXL3 (Phospho-Ser320)

<b>Clonality :</b>	Polyclonal
<b>Application :</b>	WB
<b>Reactivity :</b>	Human,Mouse,Rat
<b>Gene :</b>	FBXL3
<b>Gene ID :</b>	26224
<b>Uniprot ID :</b>	Q9UKT7
<b>Format :</b>	Purified
<b>Alternative Name :</b>	FBL3A, FBXL3A
<b>Isotype :</b>	Rabbit IgG
<b>Immunogen Information :</b>	Peptide sequence around phosphorylation site of serine 320 (S-V-S(p)-K-D) derived from Human FBXL3.

### Description

Substrate-recognition component of the SCF(FBXL3) E3 ubiquitin ligase complex involved in circadian rhythm function. Plays a key role in the maintenance of both the speed and the robustness of the circadian clock oscillation. The SCF(FBXL3) complex mainly acts in the nucleus and mediates ubiquitination and subsequent degradation of CRY1 and CRY2. Activity of the SCF(FBXL3) complex is counteracted by the SCF(FBXL21) complex.

### Product Info

<b>Amount :</b>	50 $\mu$ l / 100 $\mu$ l
<b>Content :</b>	Supplied at 1.0mg/mL in phosphate buffered saline (without Mg <sup>2+</sup> and Ca <sup>2+</sup> ), pH 7.4, 150mM NaCl, 0.02% sodium azide and 50% glycerol.
<b>Storage condition :</b>	Store the antibody at 4°C, stable for 6 months. For long-term storage, store at -20°C. Avoid repeated freeze and thaw cycles.

### Application Note

Western blotting: 1:500~1:1000

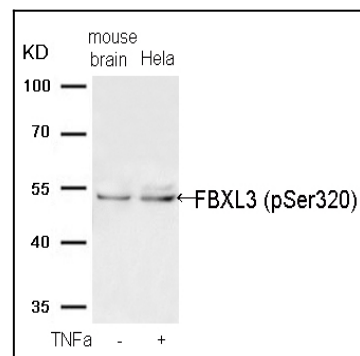


Figure 1: Western blot analysis of extracts from HeLa cells treated with TNF $\alpha$  (lane 2) and mouse brain tissue (lane 1) using FBXL3 (Phospho-Ser320) Antibody 35-1357 .