

## 35-1355: Polyclonal Antibody to MLC2 (Phospho-Ser15)

<b>Clonality :</b>	Polyclonal
<b>Application :</b>	WB,IF
<b>Reactivity :</b>	Human
<b>Gene :</b>	MYL2
<b>Gene ID :</b>	4633
<b>Uniprot ID :</b>	P10916
<b>Format :</b>	Purified
<b>Alternative Name :</b>	MLC2, MRLC1, MYRL2
<b>Isotype :</b>	Rabbit IgG
<b>Immunogen Information :</b>	Peptide sequence around phosphorylation site of serine 15 (A-N-S(p)-N-V) derived from Human MLC2.

### Description

Myosin regulatory subunit that plays an important role in regulation of both smooth muscle and nonmuscle cell contractile activity via its phosphorylation. Implicated in cytokinesis, receptor capping, and cell locomotion.

### Product Info

<b>Amount :</b>	50 $\mu$ l / 100 $\mu$ l
<b>Content :</b>	Supplied at 1.0mg/mL in phosphate buffered saline (without Mg <sup>2+</sup> and Ca <sup>2+</sup> ), pH 7.4, 150mM NaCl, 0.02% sodium azide and 50% glycerol.
<b>Storage condition :</b>	Store the antibody at 4°C, stable for 6 months. For long-term storage, store at -20°C. Avoid repeated freeze and thaw cycles.

### Application Note

Western blotting: 1:500~1:1000

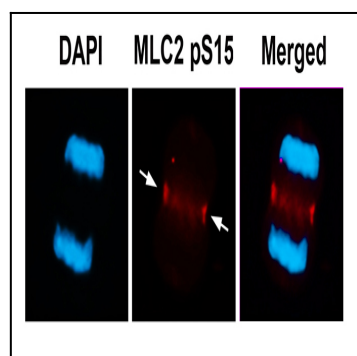


Figure 1: Immunofluorescence staining of methanol-fixed U87 cells using MLC2 (Phospho-Ser15) Antibody 35-1355 .

