

35-1339: Polyclonal Antibody to CK2 Alpha (phospho-Thr360/Ser362)

| | |
|--------------------------------|--|
| Clonality : | Polyclonal |
| Application : | WB |
| Reactivity : | Human,Mouse,Rat |
| Gene : | CSNK2A1 |
| Gene ID : | 1457 |
| Uniprot ID : | P68400 |
| Format : | Purified |
| Alternative Name : | CKII, CK2A1, CSNK2A1 |
| Isotype : | Rabbit IgG |
| Immunogen Information : | Peptide sequence around phosphorylation site of threonine360/serine 362 (V-P-T(p)-P-S(p)-P-L) derived from Human CK2a. |

Description

Casein kinases are operationally defined by their preferential utilization of acidic proteins such as caseins as substrates. The a and a' chains contain the catalytic site. Participates in Wnt signaling. CK2 phosphorylates 'Ser-392' of p53/TP53 following UV irradiation.

Product Info

| | |
|----------------------------|--|
| Amount : | 50 µl / 100 µl |
| Content : | Supplied at 1.0mg/mL in phosphate buffered saline (without Mg ²⁺ and Ca ²⁺), pH 7.4, 150mM NaCl, 0.02% sodium azide and 50% glycerol. |
| Storage condition : | Store the antibody at 4°C, stable for 6 months. For long-term storage, store at -20°C. Avoid repeated freeze and thaw cycles. |

Application Note

Predicted MW: 42kd, Western blotting: 1:1000

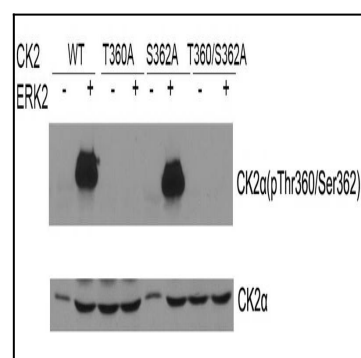


Figure 1: Western blot of CK2a(Phospho- Thr360/Ser362) antibody(35-1339) and CK2a antibody(35-1759) in vitro kinase assay. Both purified ERK2 and CK2 were used. CK2a(Phospho-Thr360/Ser362) antibody could recognize ERK2 phosphorylated wild type CK2a and CK2a when Ser362 was mutated to alanine .