

35-1335: Polyclonal Antibody to Interferon- α Receptor Type I Subunit I (phospho-Ser535/Ser539)

Clonality :	Polyclonal
Application :	WB
Reactivity :	Human
Format :	Purified
Alternative Name :	AVP,IFRC,IFNAR,IFNBR,IFN- α -REC
Isotype :	Rabbit IgG
Immunogen Information :	Peptide sequence around phosphorylation site of serine 535 or serine 539 (D-S(p)-G-N-Y-S(p)-N) derived from Human Interferon- α Receptor Type I Subunit I.

Description

Associates with IFNAR2 to form the type I interferon receptor. Receptor for interferons alpha and beta. Binding to type I IFNs triggers tyrosine phosphorylation of a number of proteins including JAKs, TYK2, STAT proteins and IFNR alpha- and beta-subunits themselves.

Product Info

Amount :	50 μ l / 100 μ l
Content :	1.0 mg/ml, 100 μ l
Storage condition :	Store the antibody at 4°C, stable for 6 months. For long-term storage, store at -20°C. Avoid repeated freeze and thaw cycles.

Application Note

Predicted MW: 70kd, Western blotting: 1: 500~1: 1000

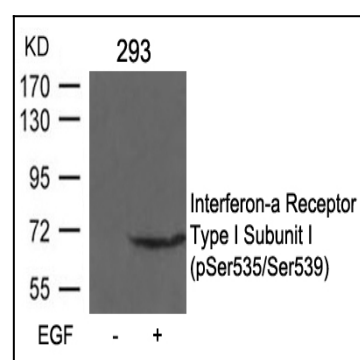


Figure 1: Western blot analysis of extracts from 293 cells untreated or treated with EGF using Interferon- α Receptor Type I Subunit I (phospho-Ser535/Ser539) Antibody 35-1335 .

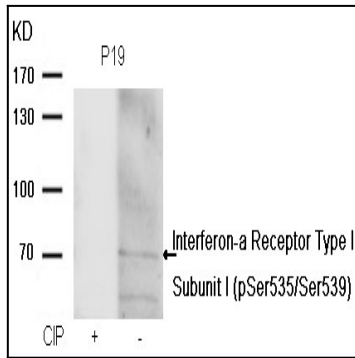


Figure 2: Western blot analysis of extracts from P19 cells, treated with calf intestinal phosphatase (CIP), using Interferon- α Receptor Type I Subunit I (phospho-Ser535/Ser539) Antibody 35-1335 .