

### 35-1333: Polyclonal Antibody to Cdc25B (Phospho-Ser149)

<b>Clonality :</b>	Polyclonal
<b>Application :</b>	WB
<b>Reactivity :</b>	Mouse
<b>Uniprot ID :</b>	Q9DB8
<b>Format :</b>	Purified
<b>Alternative Name :</b>	CDC25B
<b>Isotype :</b>	Rabbit IgG
<b>Immunogen Information :</b>	Peptide sequence around phosphorylation site of Serine 149 (F-R-S(p)-L-P) derived from Mouse Cdc25B.

#### Description

Cdc25B is a member of the CDC25 family of phosphatases. CDC25B activates the cyclin dependent kinase CDC2 by removing two phosphate groups and it is required for entry into mitosis. CDC25B shuttles between the nucleus and the cytoplasm due to nuclear localization and nuclear export signals. The protein is nuclear in the M and G1 phases of the cell cycle and moves to the cytoplasm during S and G2. CDC25B has oncogenic properties, although its role in tumor formation has not been determined. Multiple transcript variants for this gene exist. Li G, et al. (2010) Retrovirology.7:59. Wang Z,et al. (2010) BMC Cancer.10:233. Lucci MA,et al. (2010) Cell Oncol.32(5-6):361-72.

#### Product Info

<b>Amount :</b>	50 µl / 100 µl
<b>Content :</b>	Supplied at 1.0mg/mL in phosphate buffered saline (without Mg2+ and Ca2+), pH 7.4, 150mM NaCl, 0.02% sodium azide and 50% glycerol.
<b>Storage condition :</b>	Store the antibody at 4°C, stable for 6 months. For long-term storage, store at -20°C. Avoid repeated freeze and thaw cycles.

#### Application Note

Predicted MW: 62kd, Western blotting: 1:500~1:1000

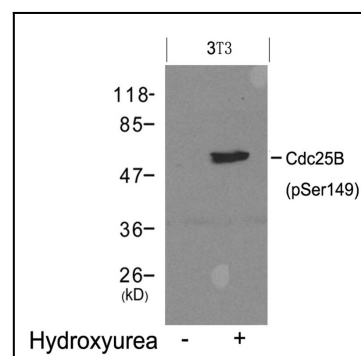


Figure 1: Western blot analysis of extracts from 3T3 cells untreated(lane 1) or treated with Hydroxyurea(lane 2) using Cdc25B(Phospho-Ser149) Antibody 35-1333 .

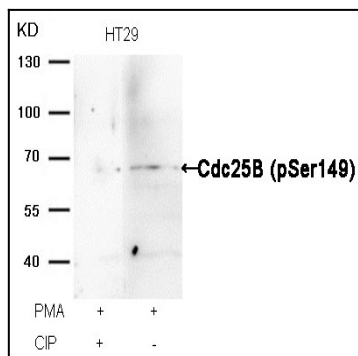


Figure 2: Western blot analysis of extracts from HT29 cells, treated with PMA or calf intestinal phosphatase (CIP), using Cdc25B (Phospho-Ser149) Antibody 35-1333 .